



BISTI / DE-NA-ZIN WILDERNESS

Activities: Hiking, photography, camping.

Facilities: No electrical hookups or water
Vault restrooms are available along with a group picnic shelter.

Season / Hours: Open year-round.

Description: The Bisti/De-Na-Zin Wilderness is a rolling landscape of badlands which offers some of the most unusual scenery found in the Four Corners Region. Time and natural elements have etched a fantasy world of strange rock formations made of interbedded sandstone, shale, mudstone, coal, and silt. The weathering of the sandstone forms hoodoos - weathered rock in the form of pinnacles, spires, cap rocks, and other unusual forms. Fossils occur in this sedimentary landform. Translated from the Navajo language, Bisti (Bis-tie) means "a large area of shale hills." De-Na-Zin (Deh-nah-zin) takes its name from the Navajo words for "cranes."

Rock units within the Bisti include most of the upper Fruitland Formation (Fossil Forest Member) and lower part of the Kirtland Formation (Hunter Wash Member), both late Cretaceous in age. The rocks are dominated by mudstones and intermittent sandstones, with occasional resistant channel sandstones.

Access: Bisti Access Parking

To reach the Bisti Access Parking Area, Drive NM 371 just under 36 miles south of Farmington (from the San Juan River crossing) or just under 45 miles north of Crownpoint, New Mexico (from the intersection of 371 and Navajo Service Route 9), and turn east on Road 7297 (a gravel road). Drive Road 7297 for approximately 2 miles to a T-intersection and turn left. Drive just under one mile to the Bisti Access Parking Area, which is just south of a broad wash on the east side of the road. There is another, smaller parking area ¼ mile further north. As this is a wide-open badland formation with little vegetation, there is no trail; visitors may walk into the area in many directions to explore. You will need to keep track of your surroundings to find your way back to your vehicle.

De-Na-Zin Trailhead

To reach the De-Na-Zin access, Drive NM 371 approximately 43¾ miles south of Farmington, New Mexico (from the San Juan River crossing) or approximately 37¼ miles north of Crownpoint, New Mexico (from the intersection of 371 and Navajo Service Route 9), and turn east on County Road 7500. Drive approximately 13¼ miles on Road 7500 to the De-Na-Zin parking area (on the left side of the road). Alternatively, drive US 550, 4 miles north of NM 57, and turn west onto County Road 7500. Drive approximately 11¼ miles to the De-Na-Zin parking area (on the right side of the road). A trail leads from the parking area approximately ¾ mile to the De-Na-Zin Wash, from where visitors walk in many directions to explore. You will need to keep track of your surroundings to find your way back to the trail and your vehicle.

Advisory:

1. *Though these trailheads are off regularly maintained roads, they are not paved. County Road 7500 can become extremely slick and impassible when wet. Conditions of roads can change at any time due to weather. Drivers should avoid dirt roads during rain or snow. Drivers should be cautious of wash-out following rain or snowmelt.*
2. *Though camping in the Wilderness is a rewarding experience, there are no water*

sources. Visitors must carry all the water they will need for the duration of the trip.

Special Rules:

- Since this is a Wilderness Area, it is closed to motorized vehicles and mechanical forms of transportation (mountain bikes included).
- Also prohibited are campfires, collecting fossils or petrified wood, climbing on delicate geologic features, traveling in groups of more than eight people, and trespassing on adjacent tribal lands.
- Permits are required for uses such as grazing, scientific research, and commercial guiding.

Have a positive influence on the area and those around you, practice the **Tread** Lightly!

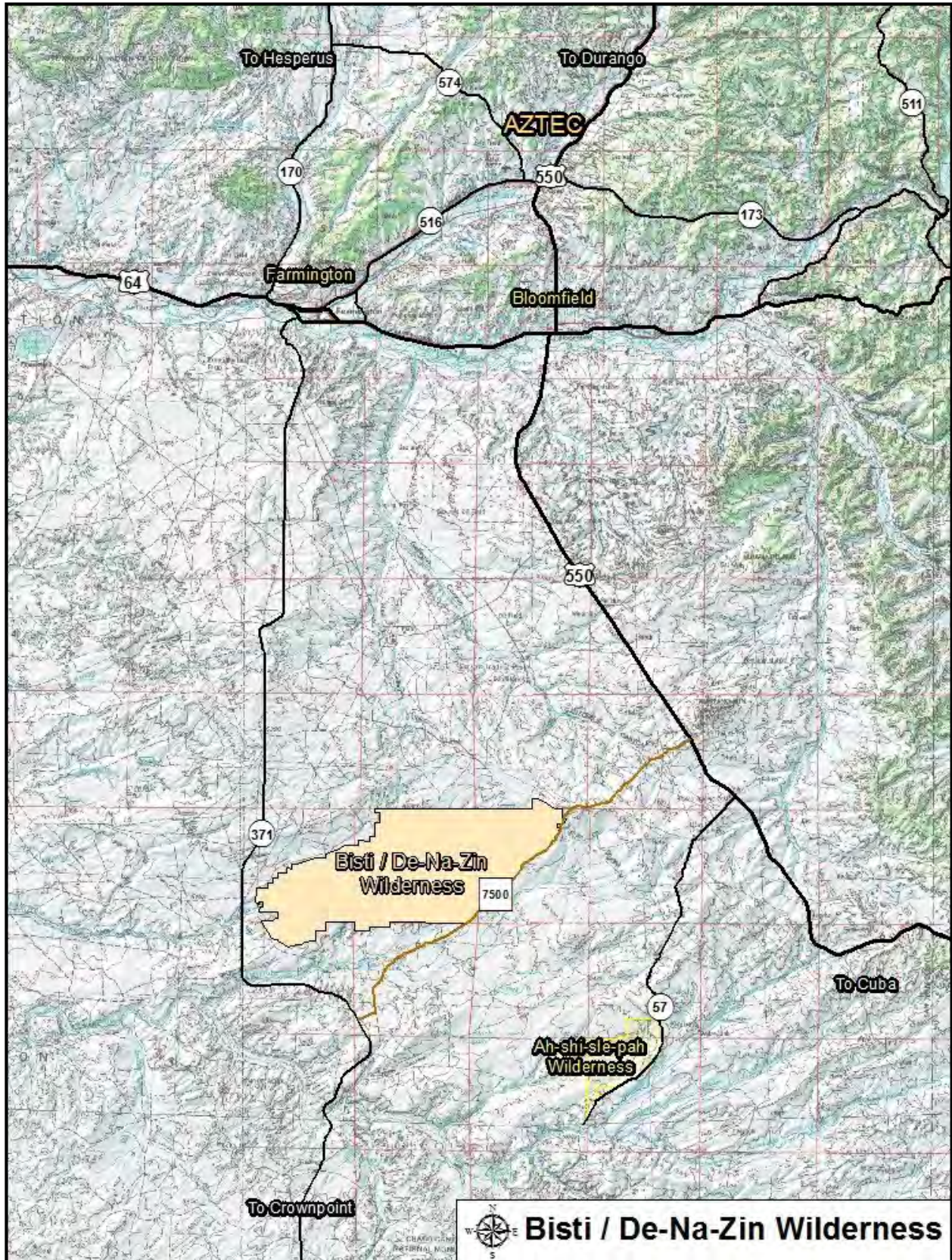
TTravel only where permitted.

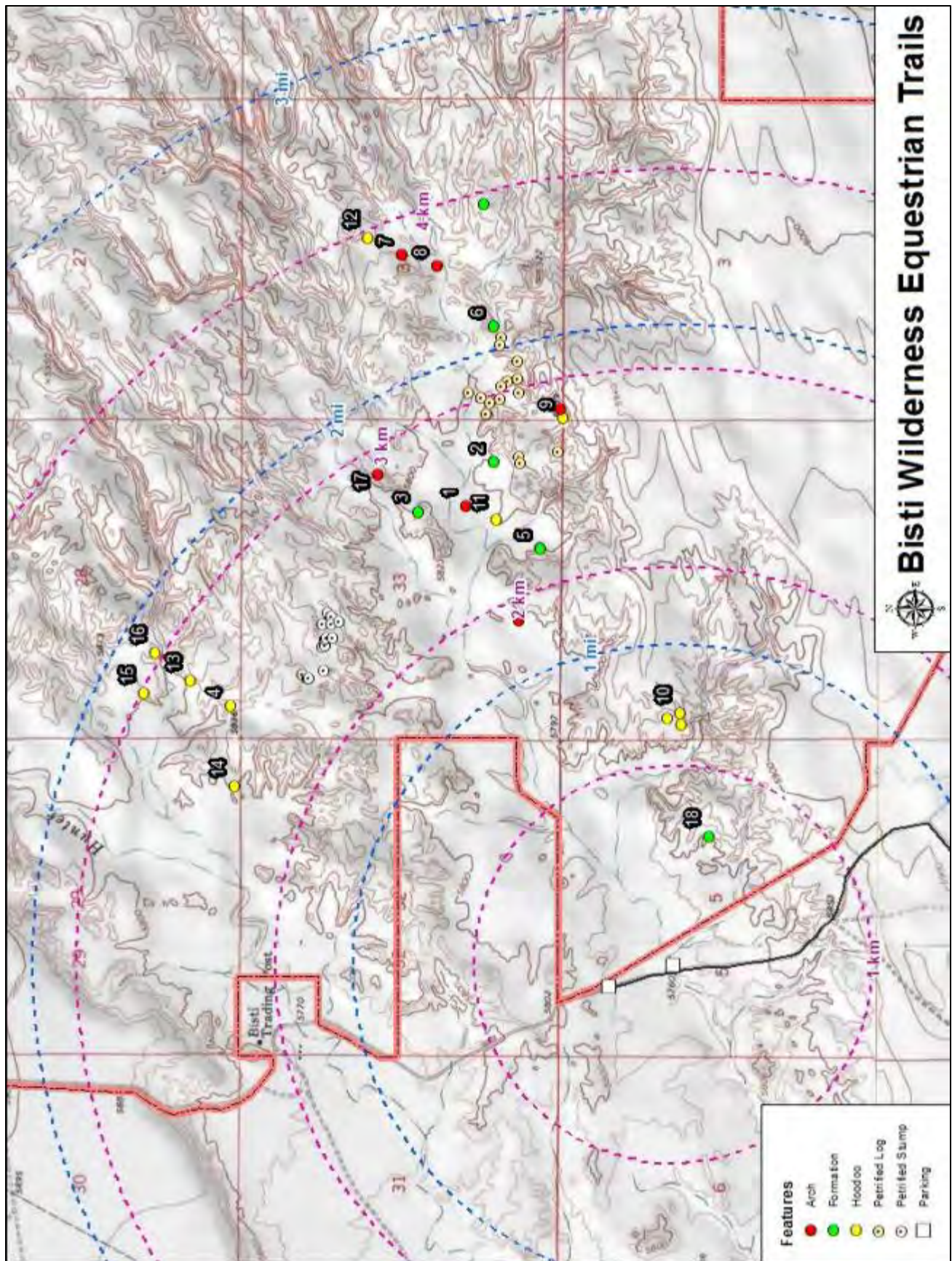
Respect the rights of others.

Educate yourself.

Avoid streams, meadows, and wildlife areas.

Drive and travel responsibly.





ARCHES

Map #: 1
Name: Bisti Arch (aka Dragon's Head)
Dimension: 2 ft span by 1.3 ft high
Latitude: 36.268692
Longitude: -108.212682
Comments: It is 1.5 mile hike one way.



Sadly as of 2020, the Bisti Arch has collapsed. It is suspected that it had been vandalized or someone tried standing on it for photo-op.

A clear reminder that the features out in the wilderness areas are fragile and so please do not climb on them.

They are irreplaceable!



Map #: 7
Name: Knight's Arch (aka Red Queen)
Dimension: Less than 1 ft diameter
Latitude: 36.271637
Longitude: -108.212067
Comments: It is 2.5 mile hike one way.



Map #:

Name: Flat Top Arch

Dimension: 2.5 ft span by 0.7 ft high

Latitude: 36.266282

Longitude: -108.232475



Map #: 8

Name: Flying Gator Arch

Dimension: 2.0 ft span by 0.5 ft high

Latitude: 36.270012

Longitude: -108.212682



Map #: 17

Name: Two Windows Arches

Dimension: Left: 4.0 ft span by 4.0 ft high
Right: 4.5 ft span by 3.0 ft high

Latitude: 36.272824

Longitude: -108.224224



Map #:

Name: -

Dimension: 7 ft span by 5.5 ft high

Latitude: 36.264410

Longitude: -108.220667



FORMATIONS

Map #: 2

Name: Egg Hatchery
(aka Cracked eggs, Alien hatchery)

Latitude: 36.267446

Longitude: -108.223653



Map #: 3

Name: Bisti Rock Garden

Latitude: 36.270844

Longitude: -108.226430



Map #: 18
Name: The Drum Stick
Latitude: 36.257597
Longitude: -108.244525



Map #: 5
Name: Komainu (Lion-Dog)
Latitude: 36.265321
Longitude: -108.228489



Map #:
Name: Egg Garden
Latitude: 36.268139
Longitude: -108.252525



HOODOOS

Map #: 4
Name: The Wings
Latitude: 36.279276
Longitude: -108.237329



Comments: Formation consists of three “winged” hoodoos. The middle wing is also an arch called Klingon Bird of Prey Arch. From below it also looks like a seal.



Map #: 9
Name: Dino Hoodoo
Latitude: 36.264291
Longitude: -108.221166



Map #: 10
Name: The Seal Hoodoo
Latitude: 36.258939
Longitude: -108.237658



Map #: 11
Name: Paint Palette Hoodoo
Latitude: 36.267308
Longitude: -108.226868



Map #: 12
Name: Two Snakes Hoodoo
Latitude: 36.273163
Longitude: -108.211153



Map #: 13
Name: Bonnet Twins Hoodoos
Latitude: 36.281140
Longitude: -108.235952



Map #: 14
Name: Hunter Wash Hoodoo
Latitude: 36.279101
Longitude: -108.241840



Map #: 15
Name: Doo Doo Bird Hoodoo
Latitude: 36.283221
Longitude: -108.236669



Map #: 16
Name: Clam Hoodoo
Latitude: 36.282750
Longitude: -108.234371



Map #:

Name: The Ostrich Hoodoo

Latitude: 36.258875

Longitude: -108.238269



Note: As of 2019, the Ostrich Hoodoo is no longer. The head and neck collapsed. This shows clearly how fragile the formations are.



Photo by Cathy Cumberworth.