



Attraction	Miles
1 Four Corners National Monument www.navajonationparks.org	76
2 Hovenweep National Monument www.nps.gov/hove	120
3 Bluff Fort bluffutah.org/bluff-fort	123
4 Valley of the Gods	142
5 Goosenecks State Park stateparks.utah.gov/parks/goosenecks	145
6 Goulding's Trading Post Museum www.gouldings.com	167
7 The Dinosaur Museum dinosaur-museum.org Edge of the Cedars State Park stateparks.utah.gov/parks/edge-of-the-cedars Nations of the Four Corners	142 144 143
8 Natural Bridges National Monument www.nps.gov/nabr	178
9 Newspaper Rock State Historic Monument	163
10 Canyonlands National Park (Needles District) www.nps.gov/cany	195
11 Hole N" the Rock theholeintherock.com	175
12 Canyonlands National Park (Island in the Sky District) www.nps.gov/cany	221
13 Dead Horse Point State Park stateparks.utah.gov/parks/dead-horse	220
14 Arches National Park www.nps.gov/arch	195
15 John Wesley Powell River History Museum johnwesleypowell.com	241
16 Goblin Valley State Park stateparks.utah.gov/parks/goblin-valley	291
17 Little Wild Horse Canyon	296
18 Capitol Reef National Park www.nps.gov/care	289
19 Monticello	139



www.aztecnm.com f @CityofAztec

New Mexico, USA

Utah Attractions



Great Road Trips Series

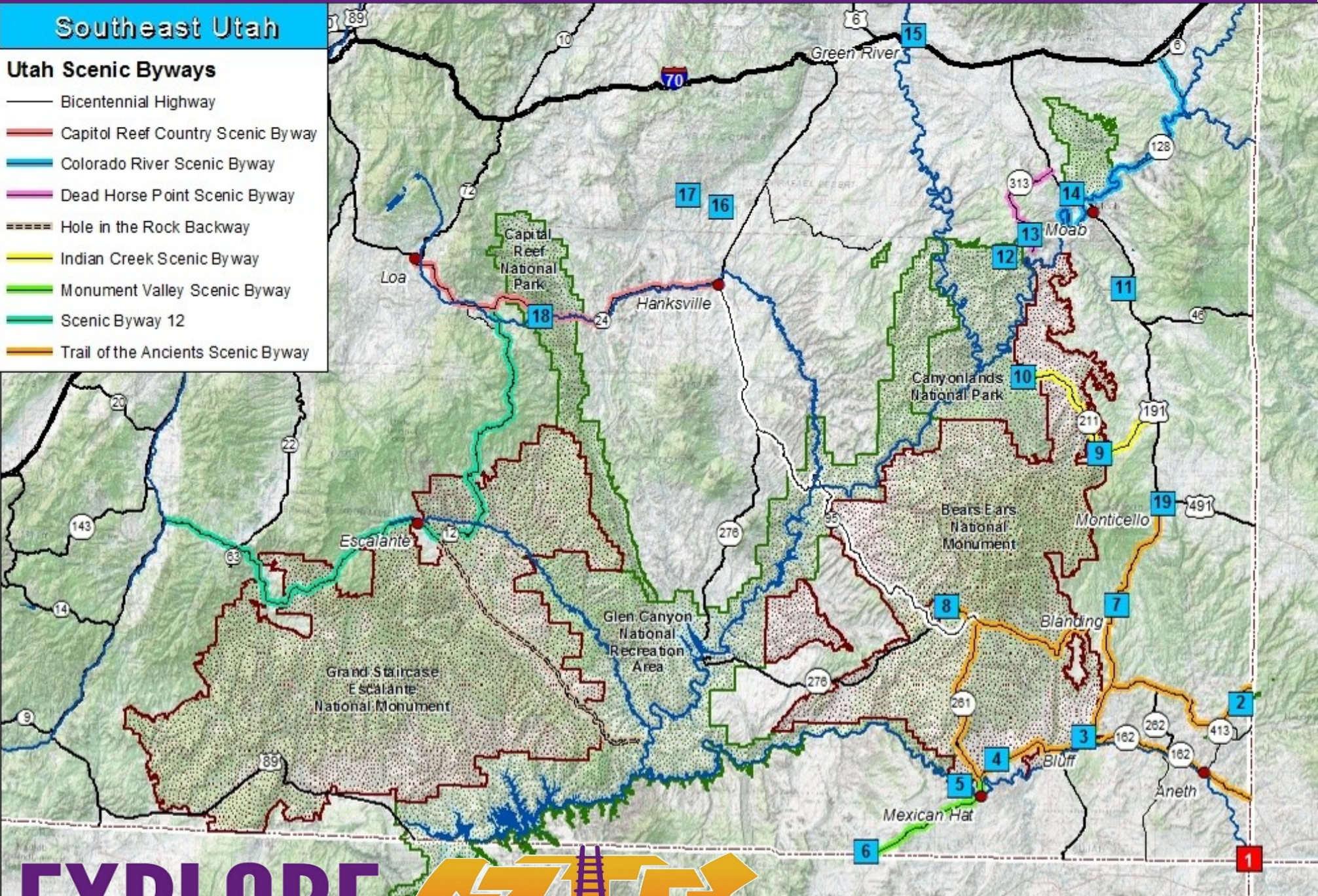
110 N. Ash Ave ~ Aztec, NM 87410 ~ (505) 334-9551

Southeast Utah Points of Interest

Southeast Utah

Utah Scenic Byways

- Bicentennial Highway
- Capitol Reef Country Scenic Byway
- Colorado River Scenic Byway
- Dead Horse Point Scenic Byway
- ==== Hole in the Rock Backway
- Indian Creek Scenic Byway
- Monument Valley Scenic Byway
- Scenic Byway 12
- Trail of the Ancients Scenic Byway



EXPLORE **AZTEC**

www.aztecmn.com