

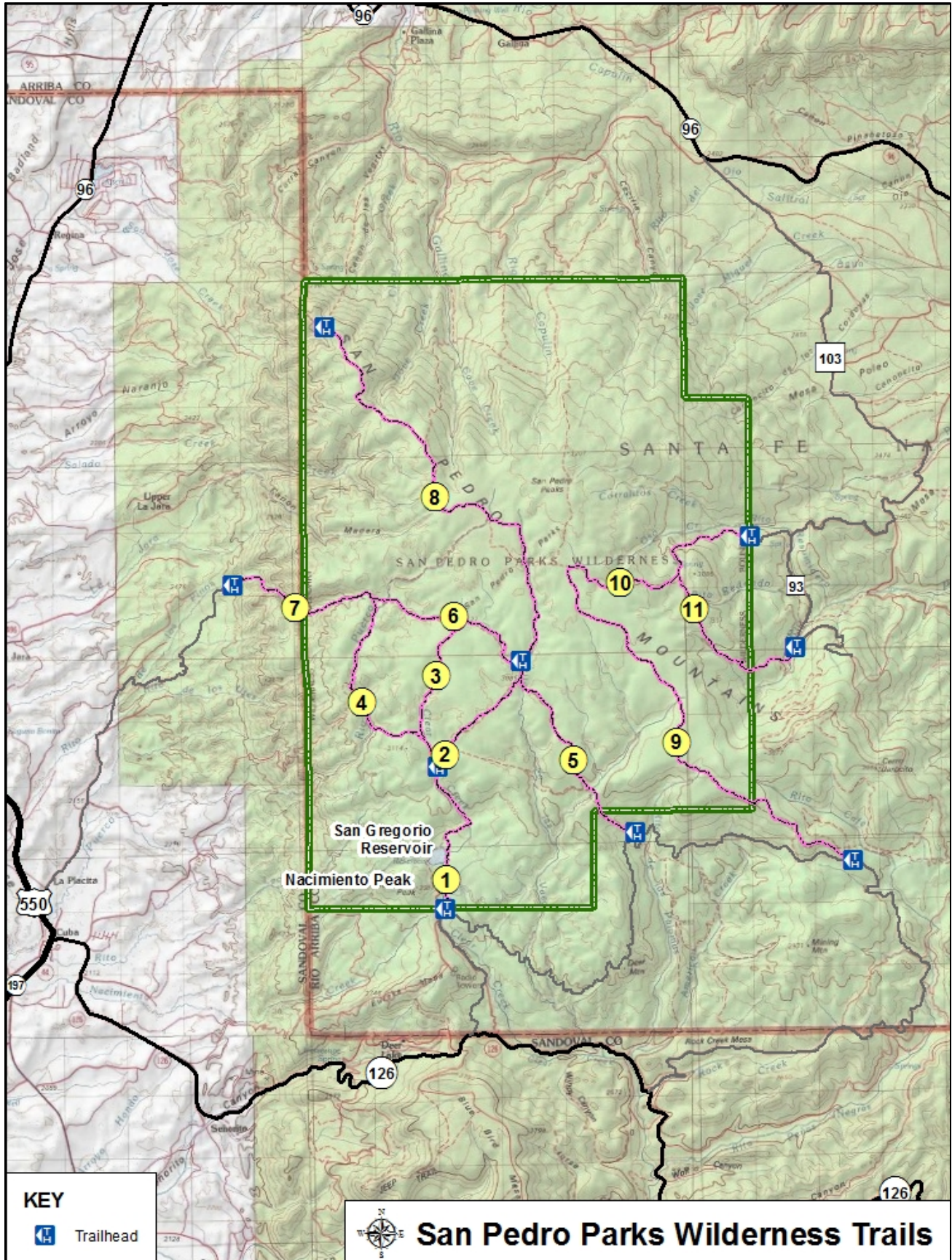


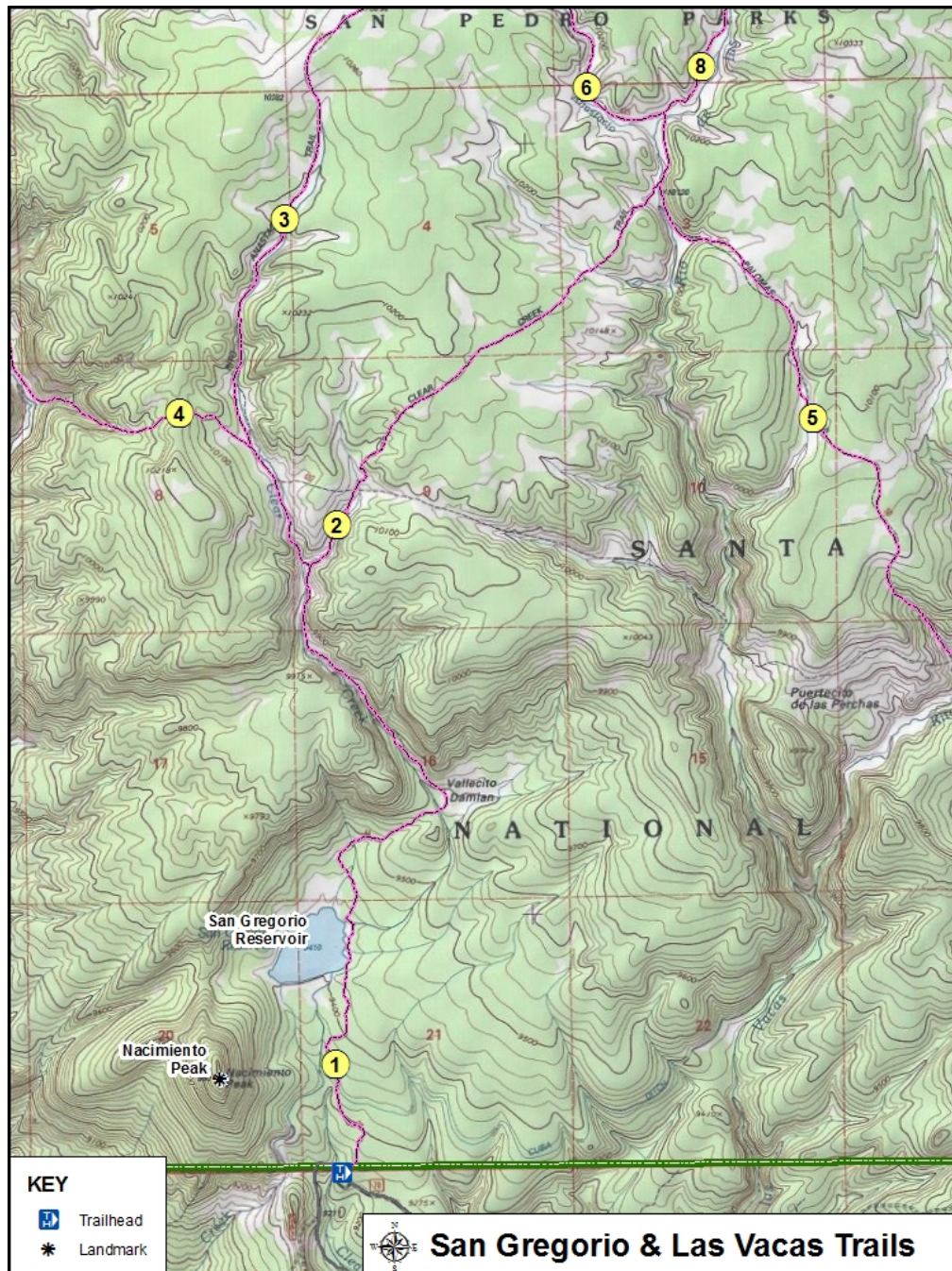
San Pedro Parks Wilderness Trails

Map	Trail Name	Difficulty	Route Type	Distance	Elev. Gain
1	San Gregorio Lake Trail	Easy	Out & Back	2.2 mi / 3.6 km	190 ft
2	Las Vacas Trail	Moderate	Out & Back	8.4 mi / 13.6 km	760 ft
3	Upper Clear Creek Trail	Moderate	Out & Back	4.4 mi / 7.2 km	220 ft
4	Lucero Trail	Moderate	Out & Back	7.8 mi / 12.6 km	450 ft
5	Palomas Trail	Moderate	Out & Back	8.4 mi / 13.6 km	1,150 ft
6	Anastacio Trail	Moderate	Out & Back	6.0 mi / 9.6 km	255 ft
7	Los Pinos Trail	Moderate	Out & Back	5.6 mi / 8.8 km	1,965 ft
8	San Jose Trail	Difficult	Out & Back	15.8 mi / 25.4 km	1,065 ft
9	Peñas Negras Trail	Easy	Out & Back	14.4 mi / 24.8 km	1,120 ft
10	Highline Trail	Easy	Out & Back	4.2 mi / 6.8 km	475 ft
11	Redondo Trail	Easy	Out & Back	9.8 mi / 14.8 km	1,120 ft

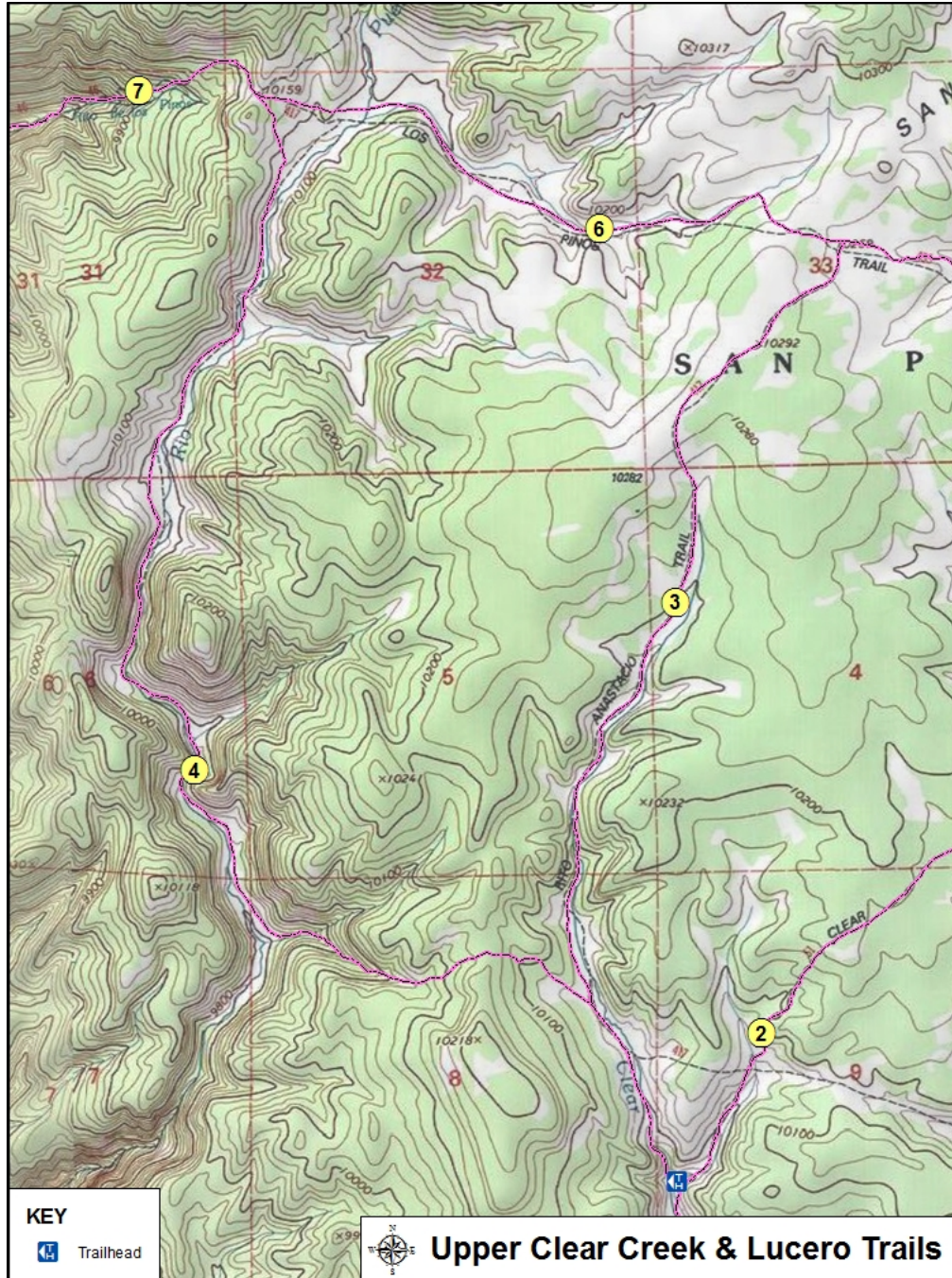
Trail Difficulty provided by Alltrails.com

San Pedro Parks is a small wilderness area located in the Santa Fe National Forest. It's unique in that there are no major peaks, cliffs, or steep parts. Trails will take one through a beautiful mixture of open meadows and thick woods.

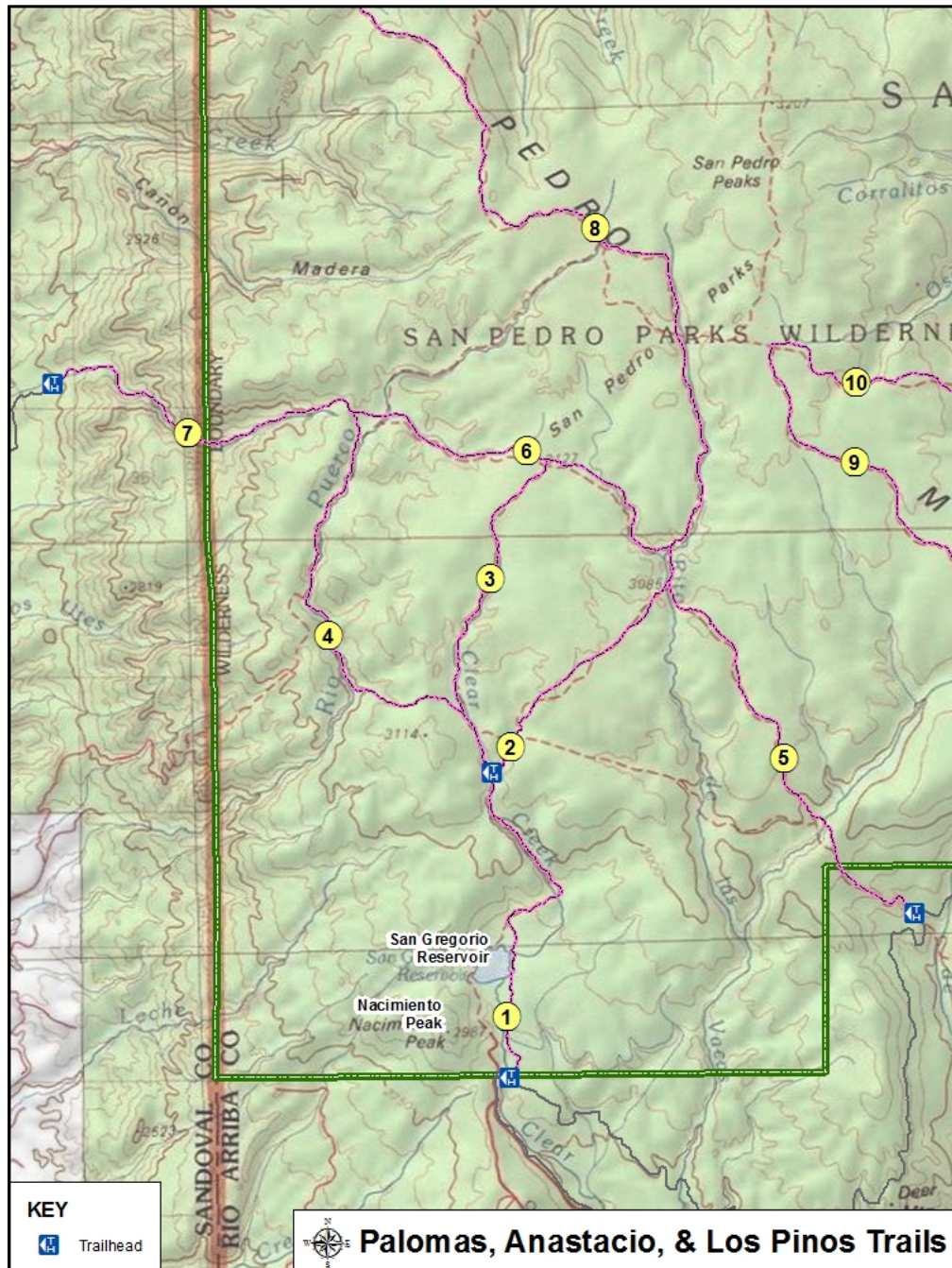




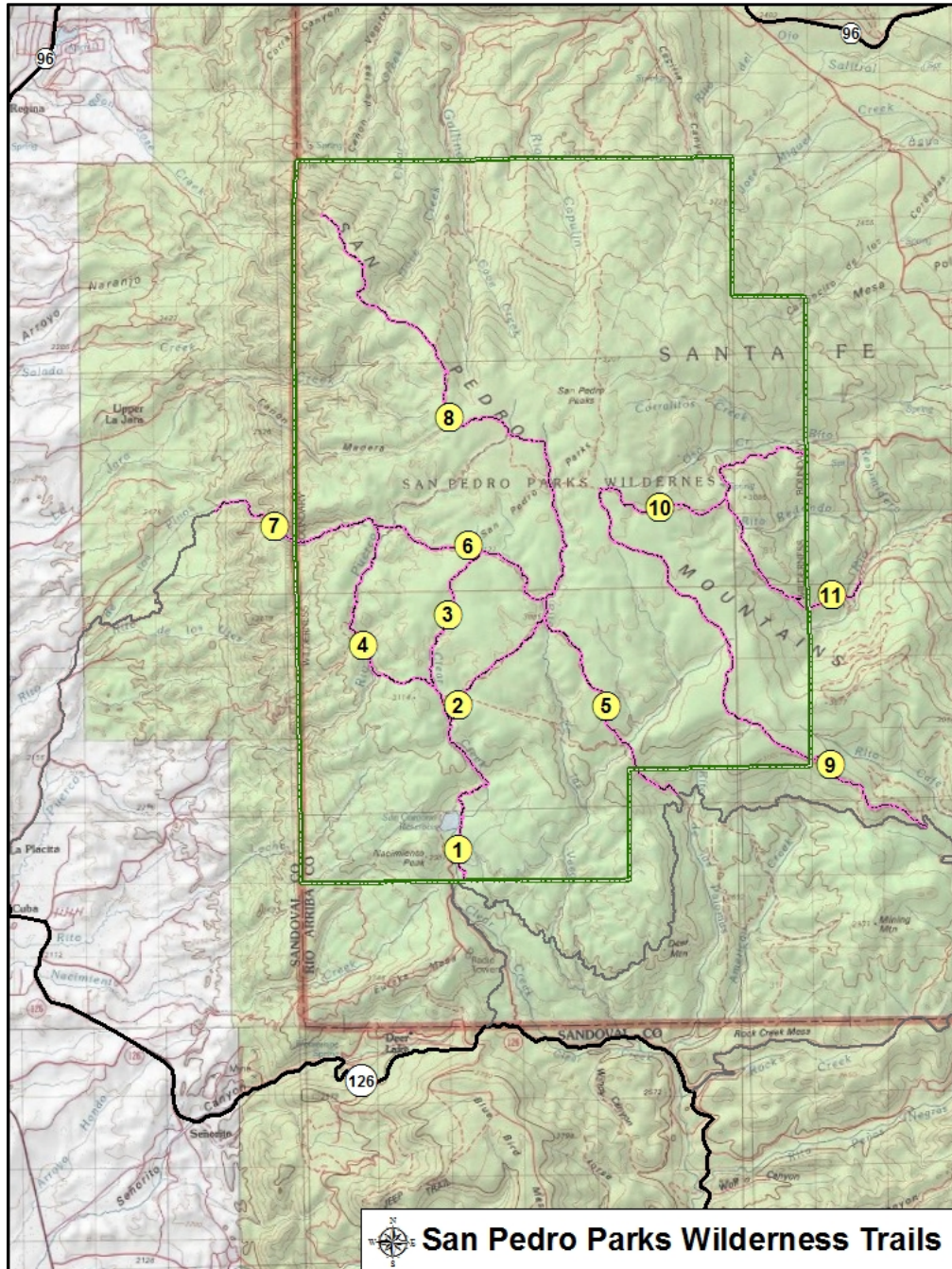
1. San Gregorio lake Trail
An easy, fairly level hike through pine woodland to San Gregorio Reservoir.
2. Las Vacas Trail
Sometimes referred to as Clear Creek Trail, this trail extends north beyond San Gregorio Lake.



3. Upper Clear Creek Trail
This trail branches off of the Lucero Trail and connects with Anastacio Trail. Can be combined as a smaller loop trail (Las Vacas, Lucero, Upper Creek, and Anastacio).
4. Lucero Trail
Can be used as part of a larger loop trail, (Las Vacas, Lucero, and Anastacio).

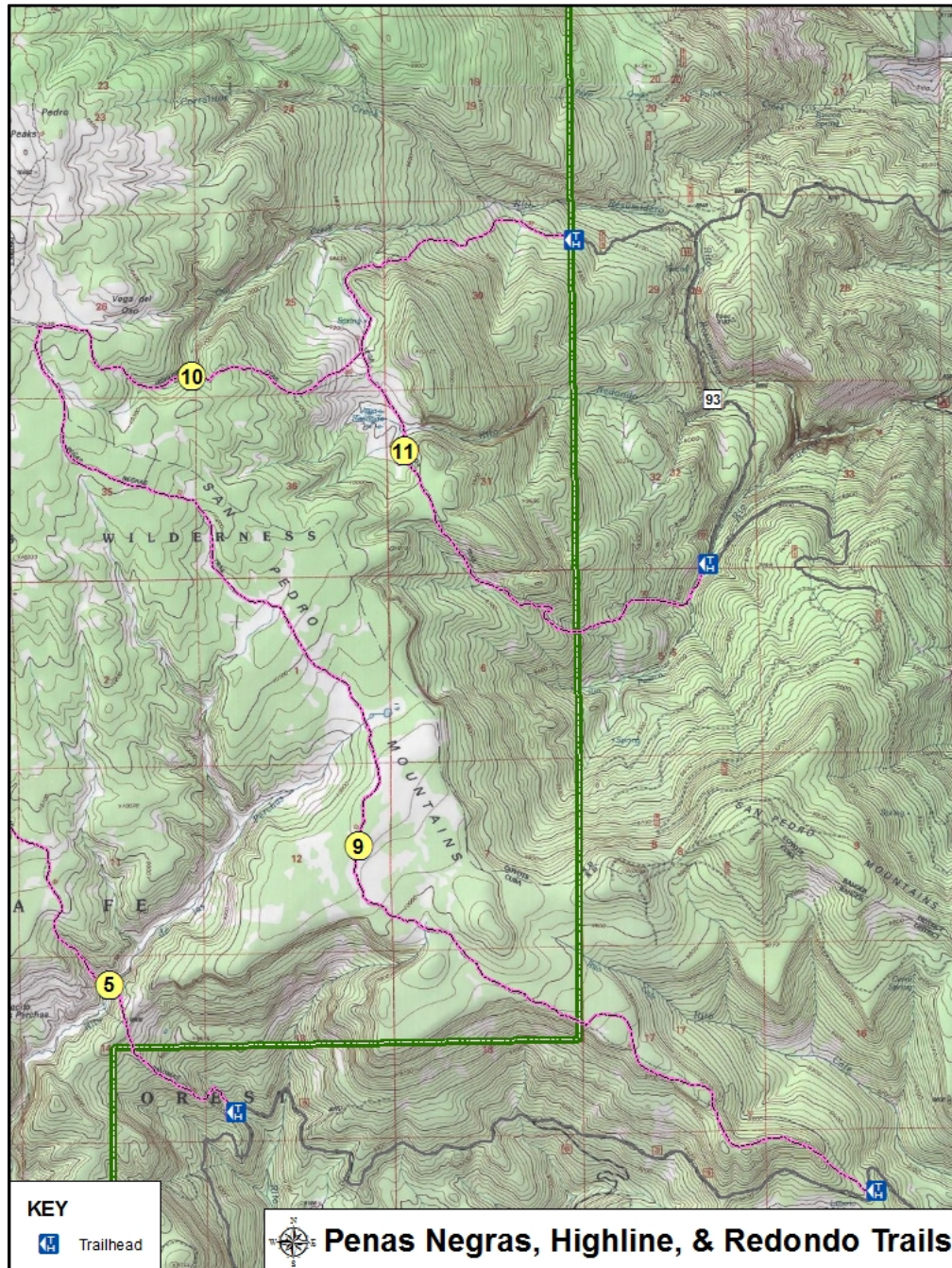


5. Palomas Trail
A simple out and back trail or can be combined with Anastacio, Upper Clear Creek / Lucero, and Las Vacas to form a loop.
6. Anastacio Trail
This trail is normally combined with several other trails to form a loop.
7. Los Pinos Trail
A simple out and back trail or can be combined with Anastacio, Upper Clear Creek / Lucero, and Las Vacas to form a loop.



8. San Jose Trail

A considerably long out and back trail, best approached from the south in conjunction with Palomas Trail (#5).



9. Peñas Negras Trail

A considerably long out and back trail, best approached from the south off of American Creek Road via Hwy 126.

10. Highline Trail

A short trail which connects Peñas Negras with Rodondo.

11. Redondo Trail

A moderate out and back trail can be accessed from the south off of American Creen Road or the north by Forest Service Roads 103 and 93 via Hwy 96.