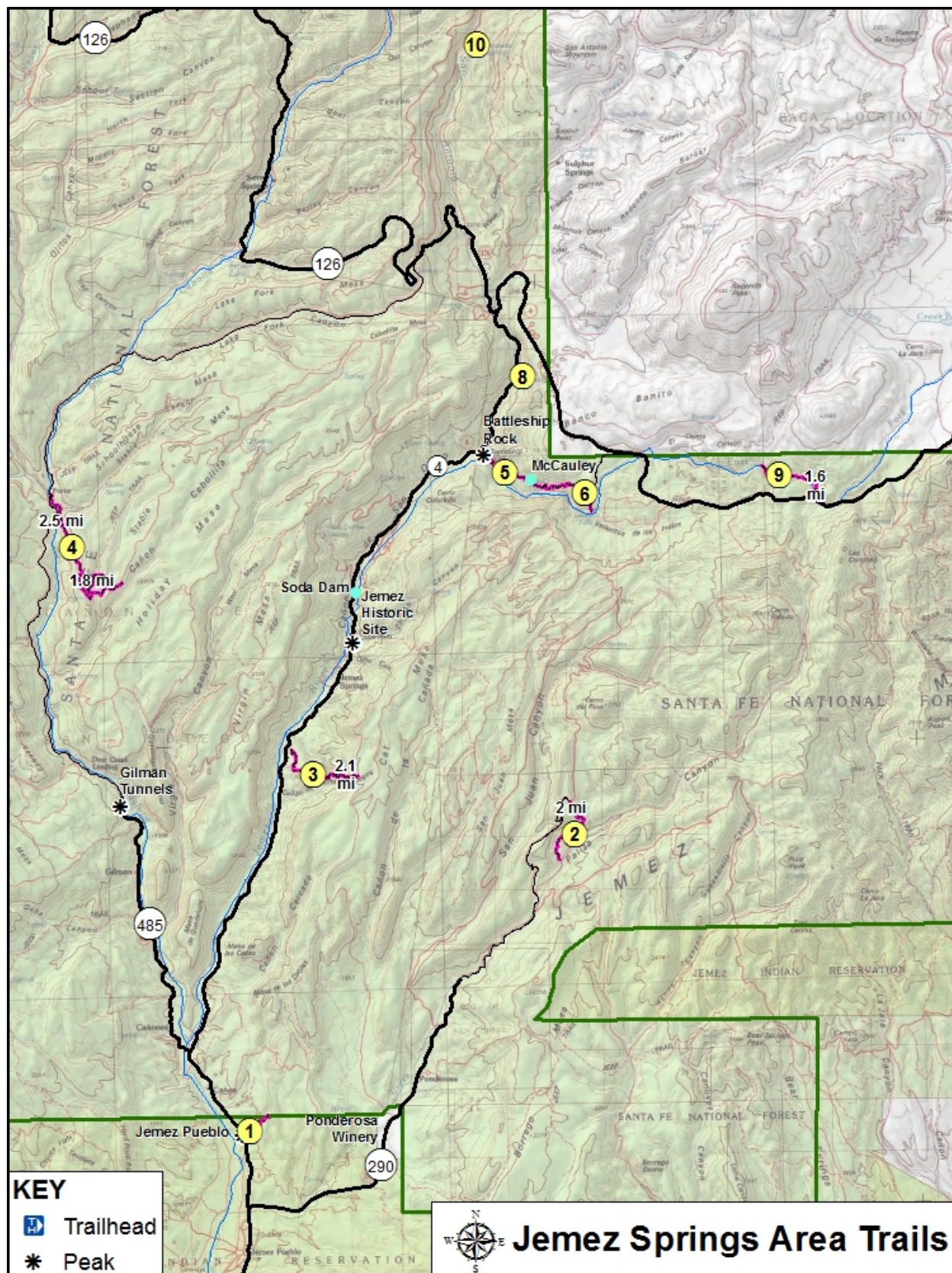




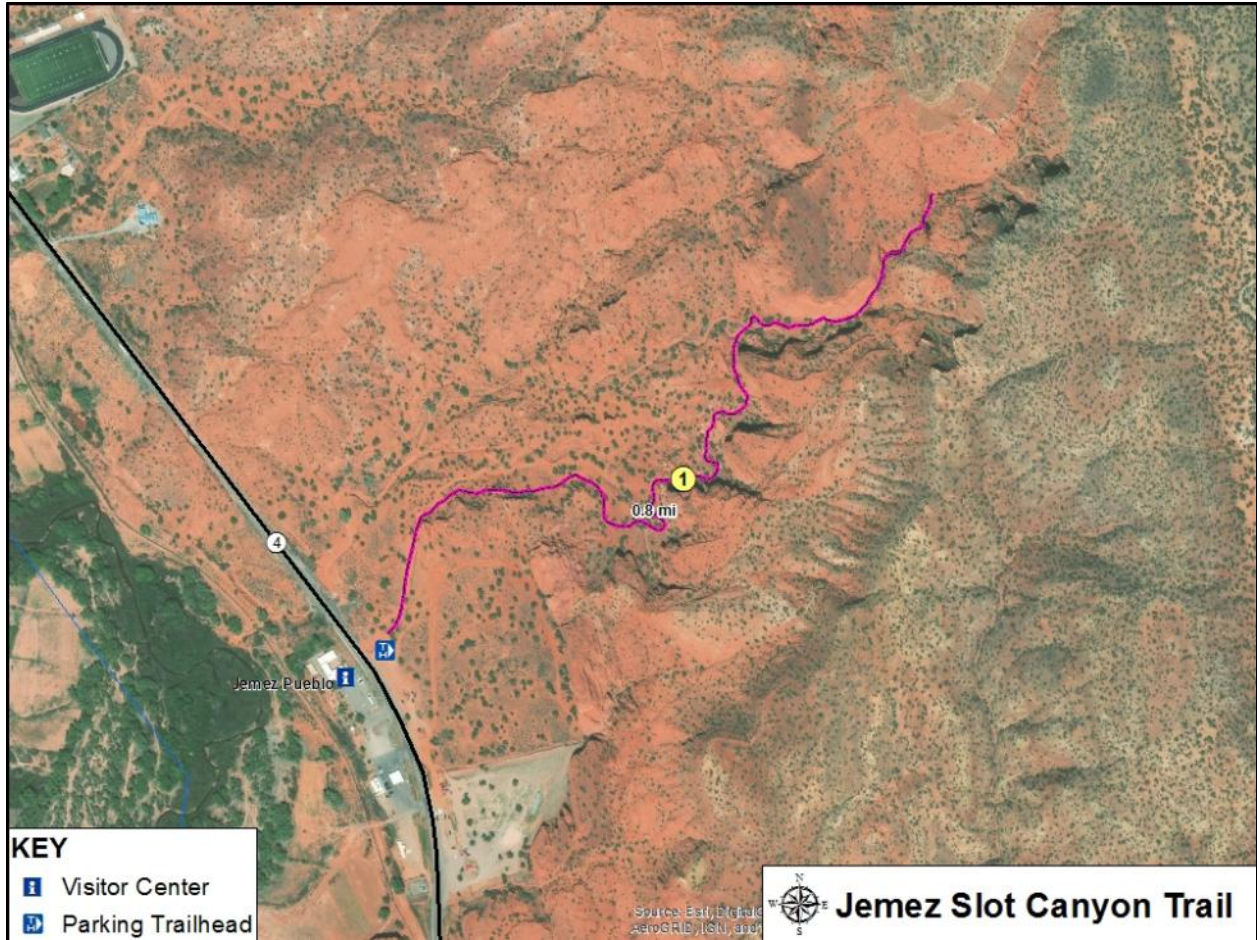
### Jemez Springs Area Trails

Map	Trail Name	Difficulty	Route Type	Distance	Elev. Gain
1	Jemez Slot Canyon	Easy	Out & Back	1.6 mi / 2.6 km	160 ft
2	Goblin Colony Trail	Easy	Out & Back	4.0 mi / 6.6 km	-
3	Cat Mesa Trail	Moderate	Out & Back	4.2 mi / 6.8 km	1,325 ft
4	Stable Mesa Trail	Moderate	Out & Back	5.0 mi / 8.0 km	1,130 ft
5	McCauley Hot Springs (West Trail)	Moderate	Out & Back	3.4 mi / 5.4 km	810 ft
6	McCauley Hot Springs (East Trail)	Moderate	Out & Back	3.2 mi / 5.2 km	-
7	Jemez Falls Trail	Easy	Out & Back	0.6 mi / 1.0 km	120 ft
8	Spence Hot Springs Trail	Easy	Out & Back	0.6 mi / 1.0 km	120 ft
9	East Fork Trail	Easy	Out & Back	3.2 mi / 5.2 km	120 ft
10	San Antonio Hot Springs	Moderate	Out & Back	0.6 mi / 0.8 km	400 ft

Trail Difficulty provided by [Alltrails.com](http://Alltrails.com)

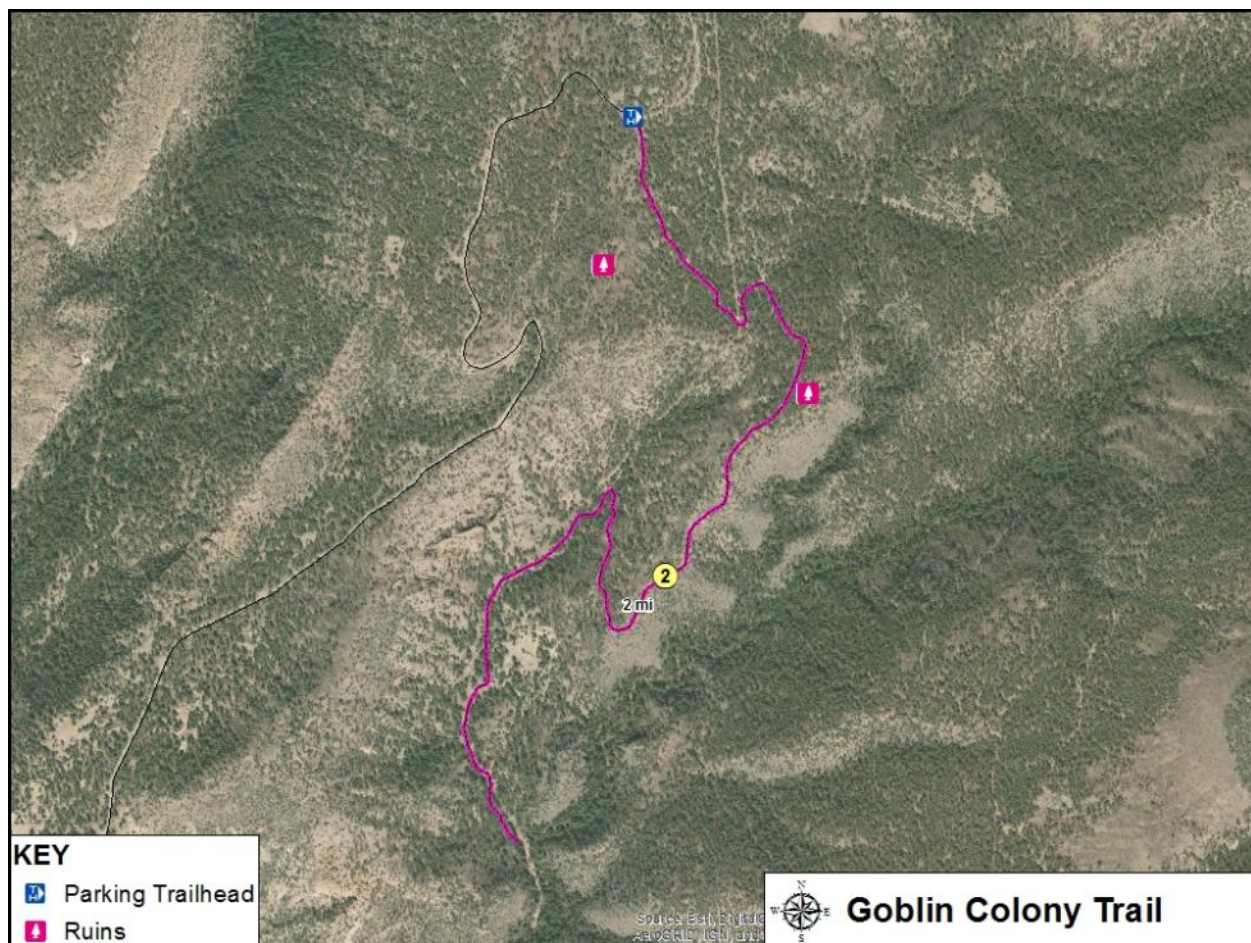






1. Jemez Slot Canyon

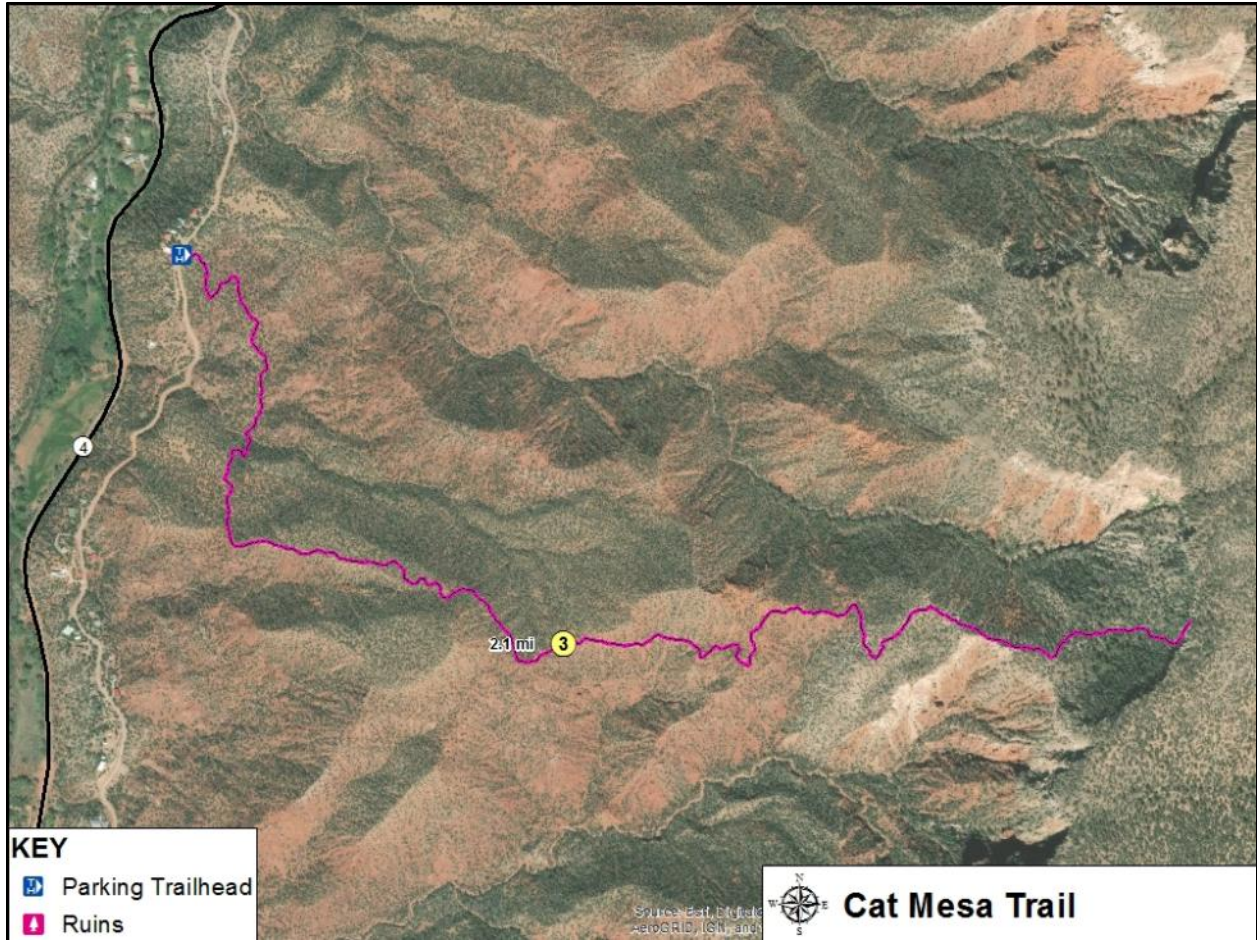
Beautiful long slot which is 80 ft deep. There is an upper slot if you are comfortable with some real climbing. Leave the end of the formal trail and walk in to see. This slot is on Jemez Pueblo Lands, so please pay for your permit across the street at the Jemez Pueblo Visitor Center.



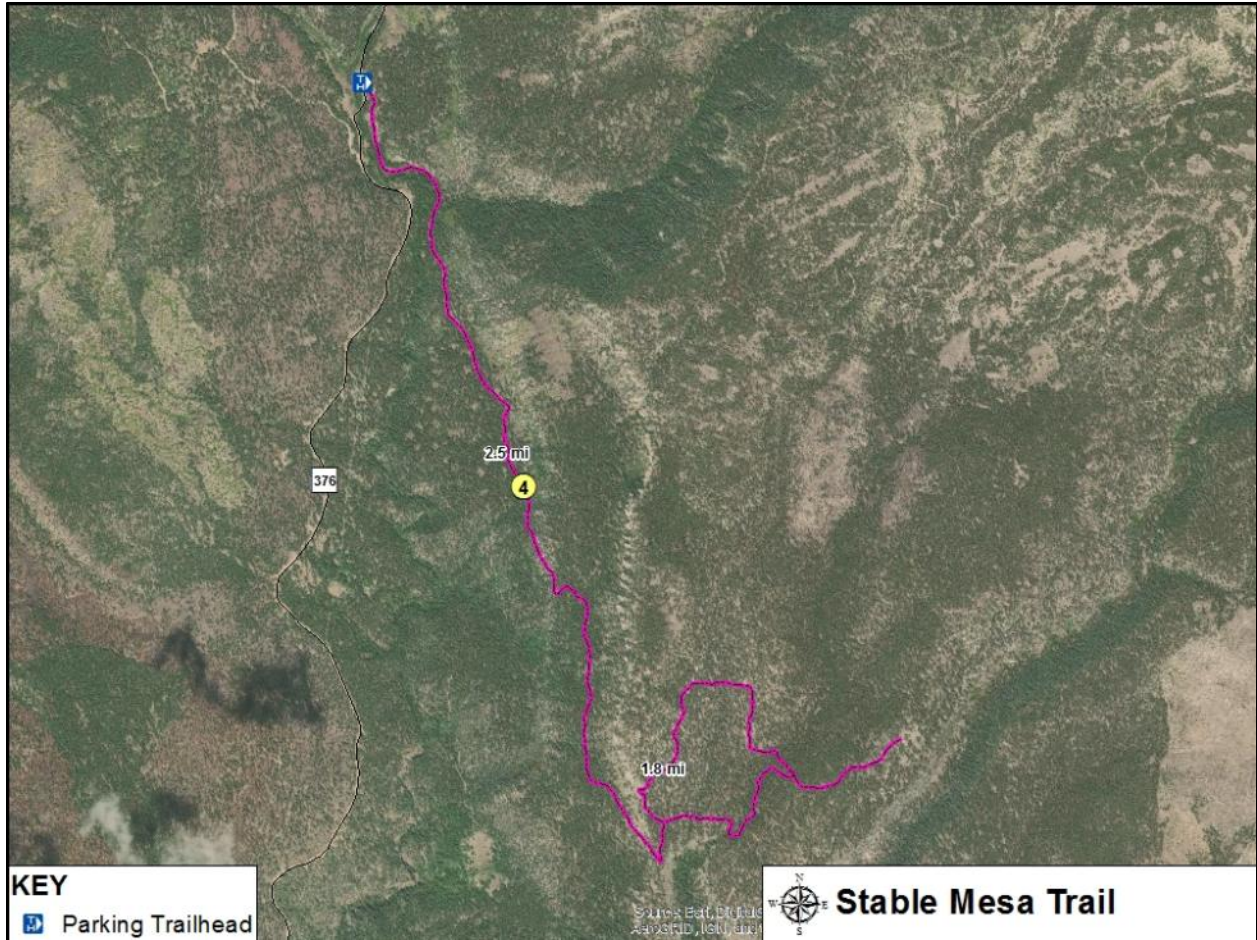
2. Goblin Colony Trail

This easy trail takes one to assorted spires / hoodoos called the Goblin Rocks or Colony. Look closely at some of the volcanic tuff rocks and you may find petroglyphs.





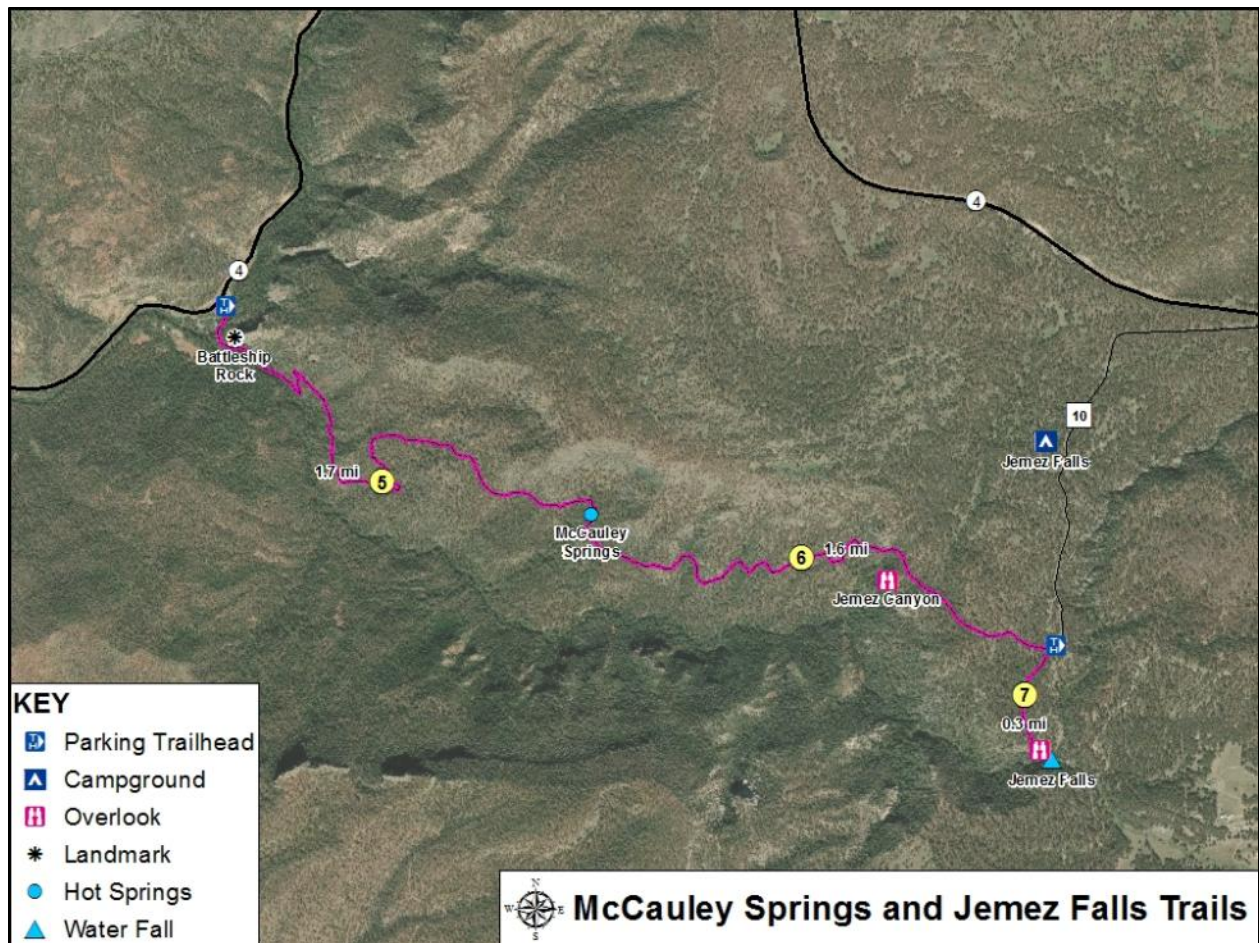
3. Cat Mesa Trail  
Low traveled trail from Hwy 4 to the base of Cat Mesa.



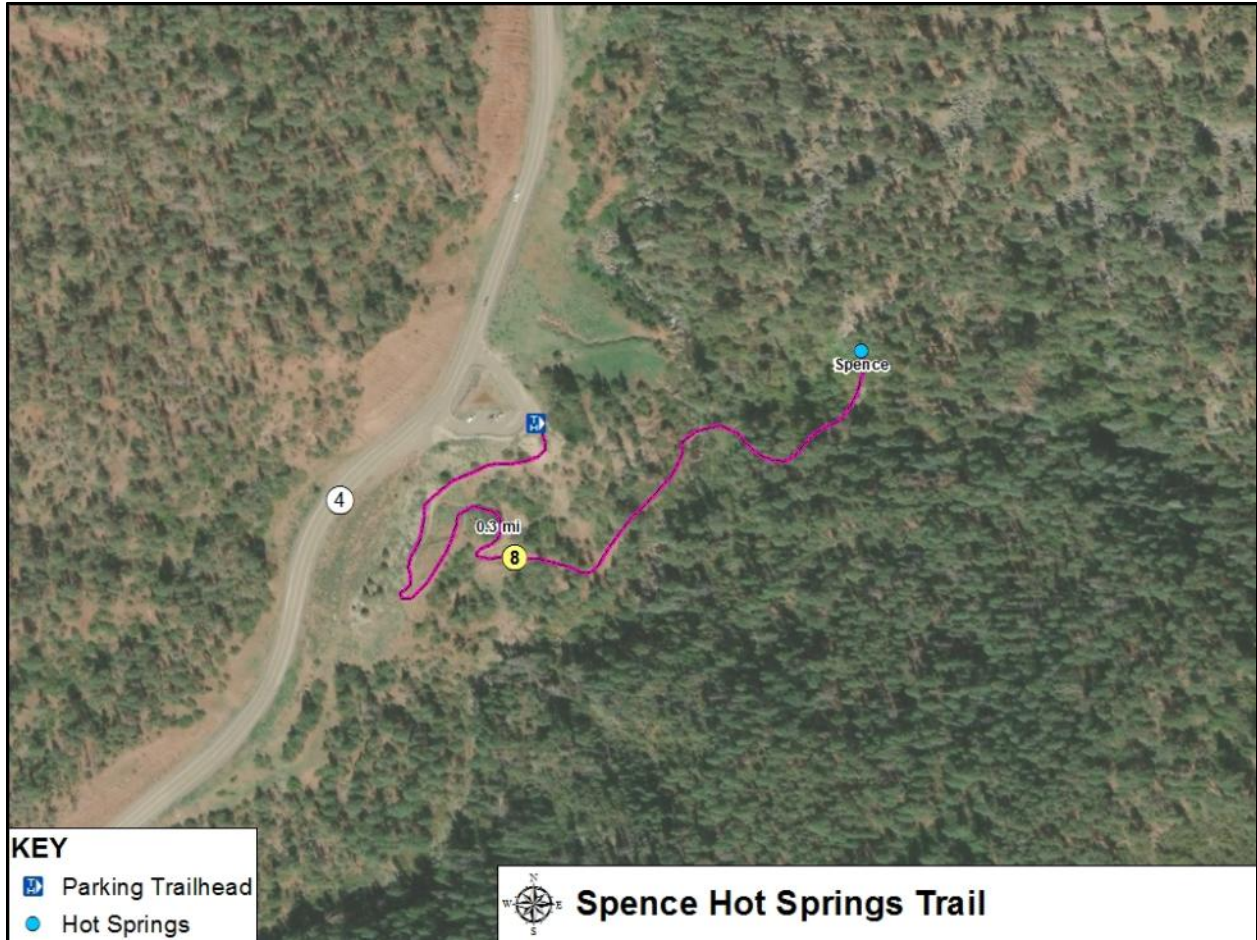
4. Stable Mesa

Access to the trail is closed from December to April. Trail is not maintained so can be difficult to spot in areas. Offers nice views and an occasional small natural arch.



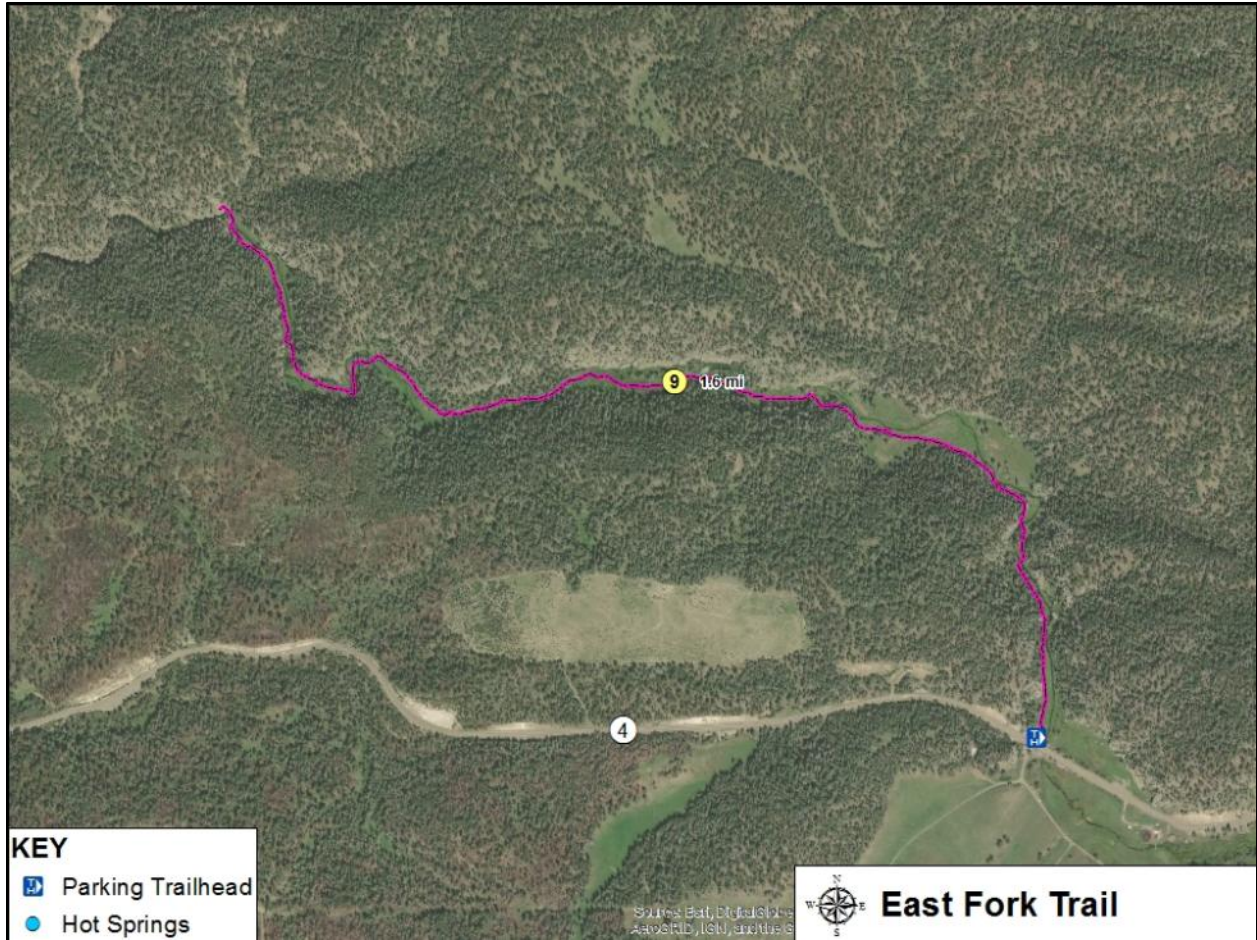


5. McCauley Springs – West Trail  
West approach from Battleship Rock off of Hwy 4.
6. McCauley Springs – East Trail  
East Approach from Jemez Falls Campground, less steep than the west approach.
7. Jemez Falls Trail  
Short trail to overlook to view Jemez Falls.

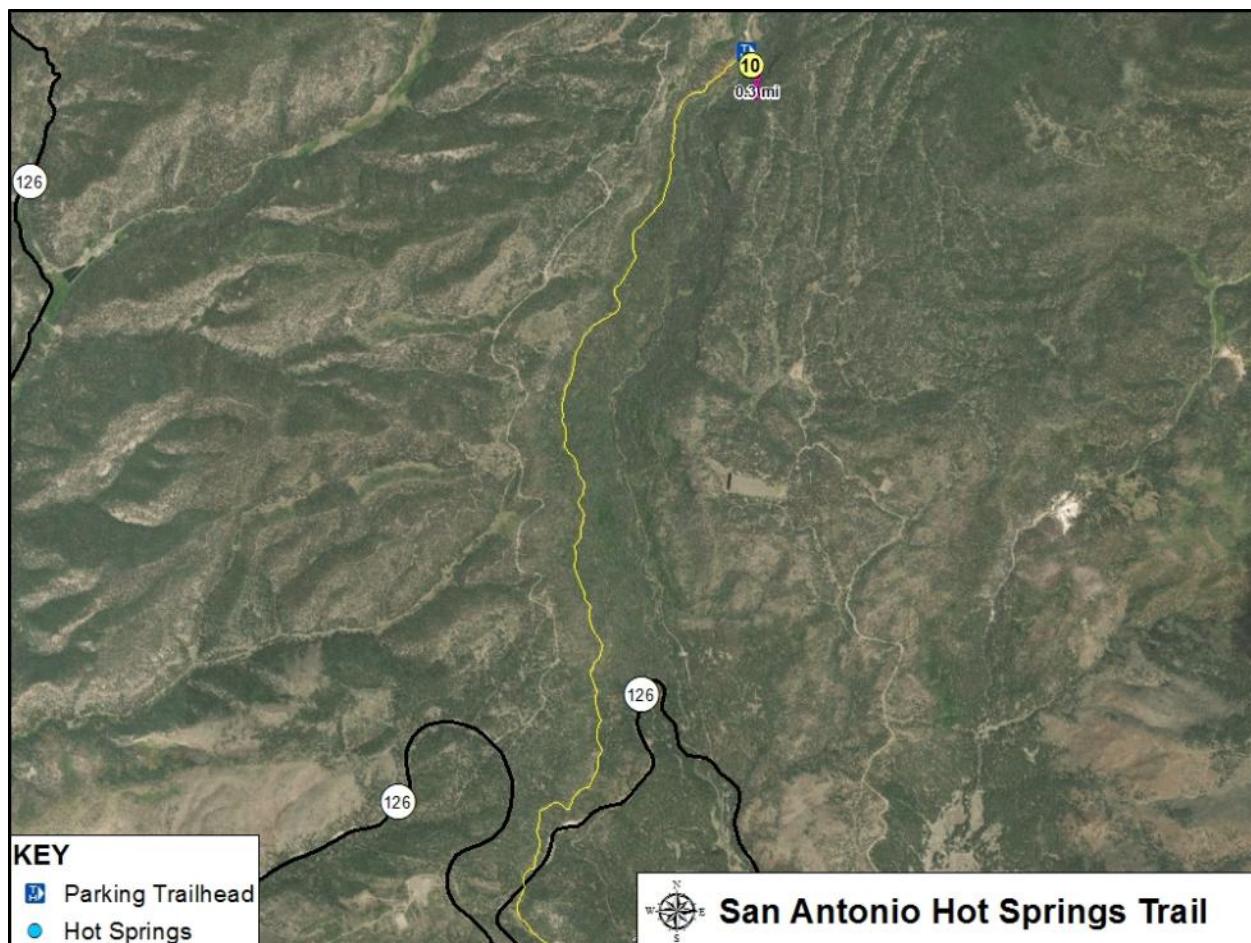


8. Spence Hot Springs Trail  
Short trail to Spence Hot Springs which is a favorite springs in the area, often packed by midday.





9. East Fork Trail  
Easy trail along the East Fork of the Jemez River. This fork of the river is where Jemez Falls resides.



10. San Antonio Hot Springs Trail

Short trail to San Antonio Hot Springs. Drive of approximately 5.0 miles on dirt road, but a less populated hot spring.