



New Mexico, USA
UPPER LAKE MARY

General Information

Located 16 miles southeast of Flagstaff, Upper Lake Mary is the largest of Flagstaff's twin lakes (Lower Lake Mary is often dry). This long, narrow reservoir is especially popular with power boaters and water skiers because there is no motor size limit on it.

Coconino National Forest
1824 S. Thompson St.
Flagstaff, AZ 86001
(928) 527-3600

Activities

Boating, camping, climbing, fishing, hiking, and water recreation such as swimming, waterskiing and windsurfing.

Facilities

Two developed campgrounds: Pine Grove and Lake View. Pine Grove has fully 46 developed sites (16 handicap-accessible), coin-operated showers, tables, fire rings, cooking grills, drinking water, toilets (flush type, handicap-accessible), and RV dump station. Lake View has 30 single unit sites with tables, fire rings and cooking grills, drinking water, three accessible vault type toilets, no utilities.

Fees

Campsites fees required.
Fishing license is required from the Arizona Game and Fish.

Fishing

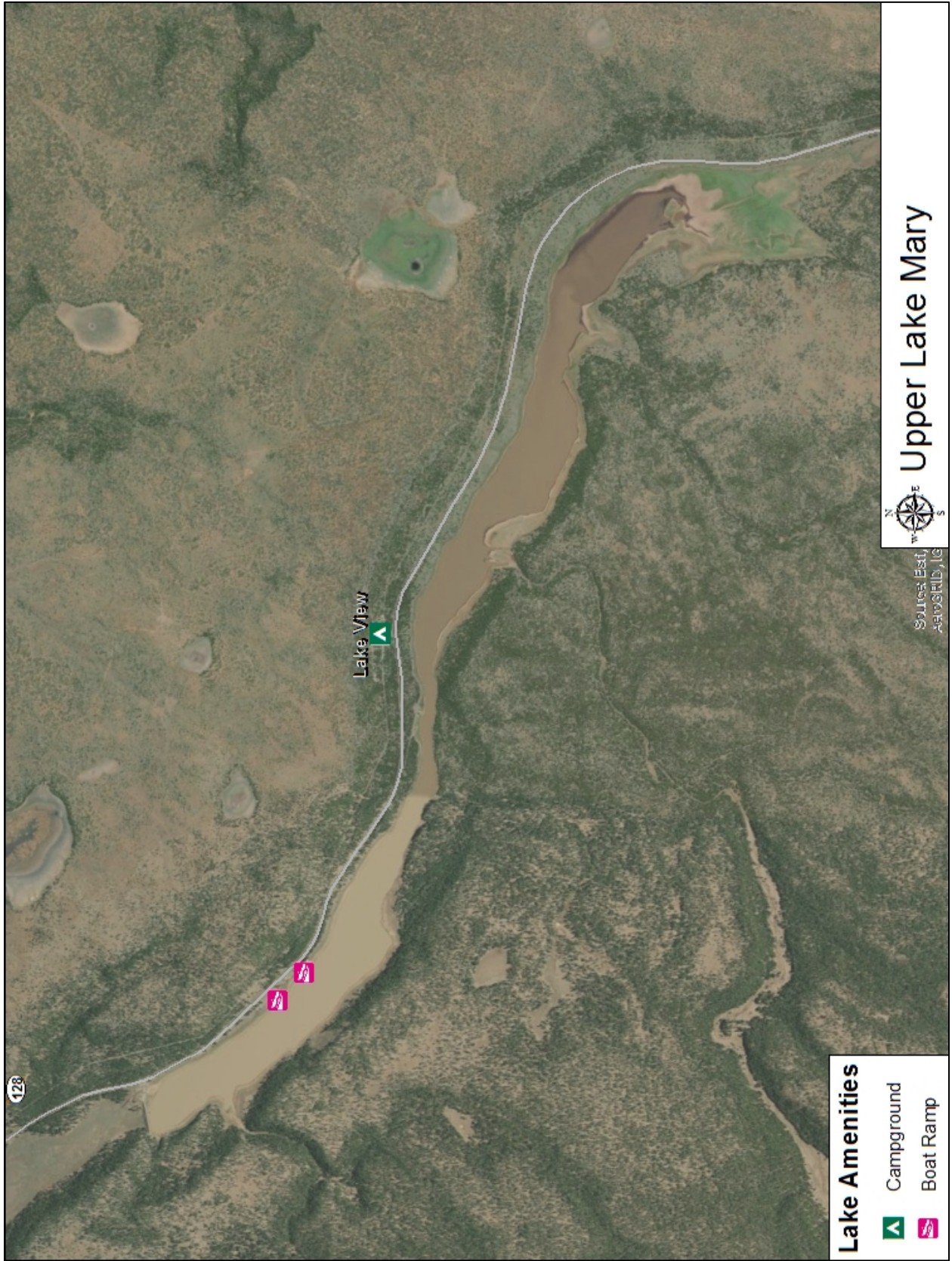
The lake is stocked with northern pike, channel cat, crappie, and some trout.

Fishing License

Arizona Game & Fish
5000 W. Carefree Highway
Phoenix, AZ 85086-5000
www.azgfd.com

Water Recreation

Water recreation includes fishing and motorized boating (no motor size limit), waterskiing, canoeing, kayaking, and windsurfing.



110 North Ash Ave Aztec, New Mexico 87410 (888) 543-4629