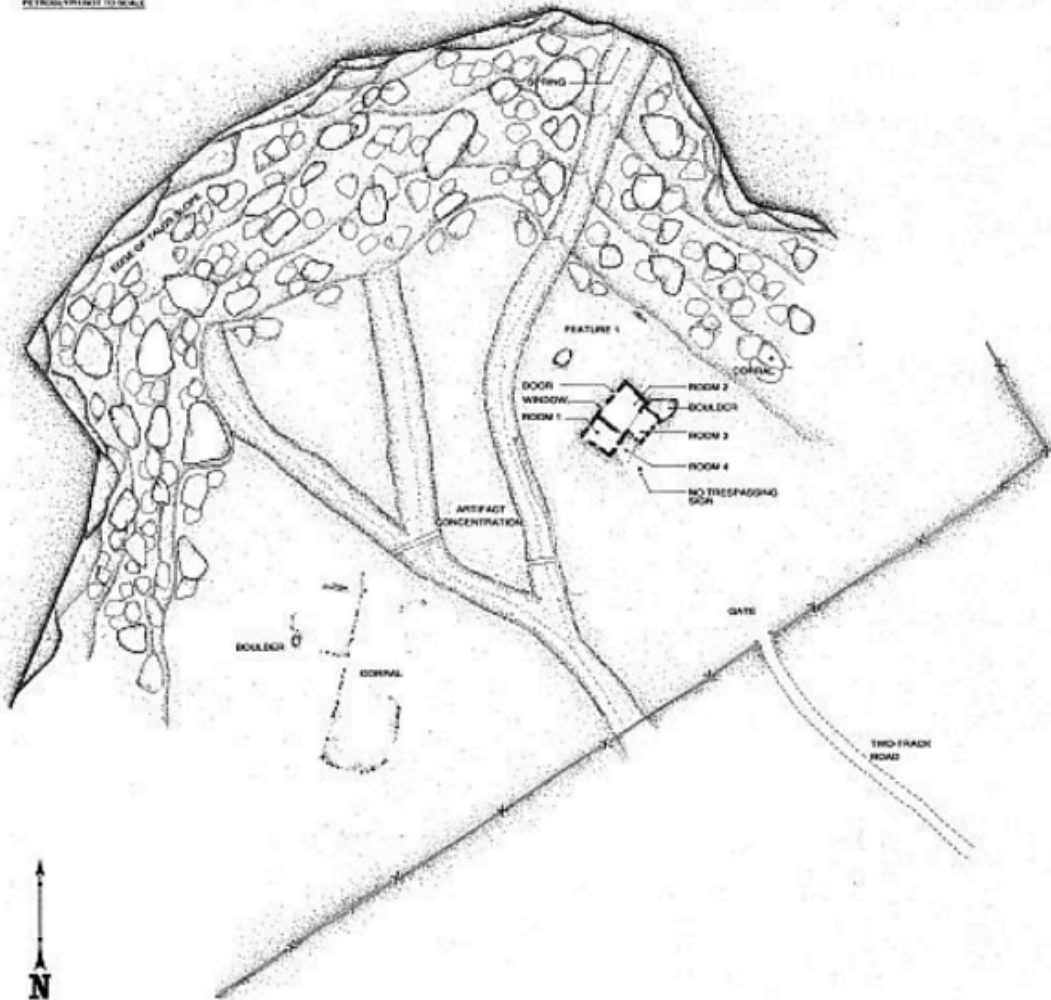


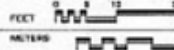
MARGARITA MARTINEZ HOMESTEAD



PROBLYNTHIN TO SCALE



SITE PLAN
SCALE: 1"=20'



VICINITY MAP



LOCATION MAP

THE SAN JUAN BASIN IN NORTHEAST NEW MEXICO HAS A LONG HISTORY OF PEOPLE OCCUPYING AND THEN ABANDONING AREAS AT BOTH THE REGIONAL AND COMMUNITY LEVEL DURING THE LATE NINETEENTH AND EARLY TWENTIETH CENTURIES. A HISPANIC COMMUNITY THAT BECAME KNOWN AS HAYNES FLOURISHED IN UPPER LARGO CANYON. JOHN HAYNES (DOB) HAYNES ESTABLISHED THE HAYNES TRADING POST, WHICH BECAME THE COMMUNITY COMMERCIAL CENTER AND POST OFFICE BETWEEN 1908 AND 1925.

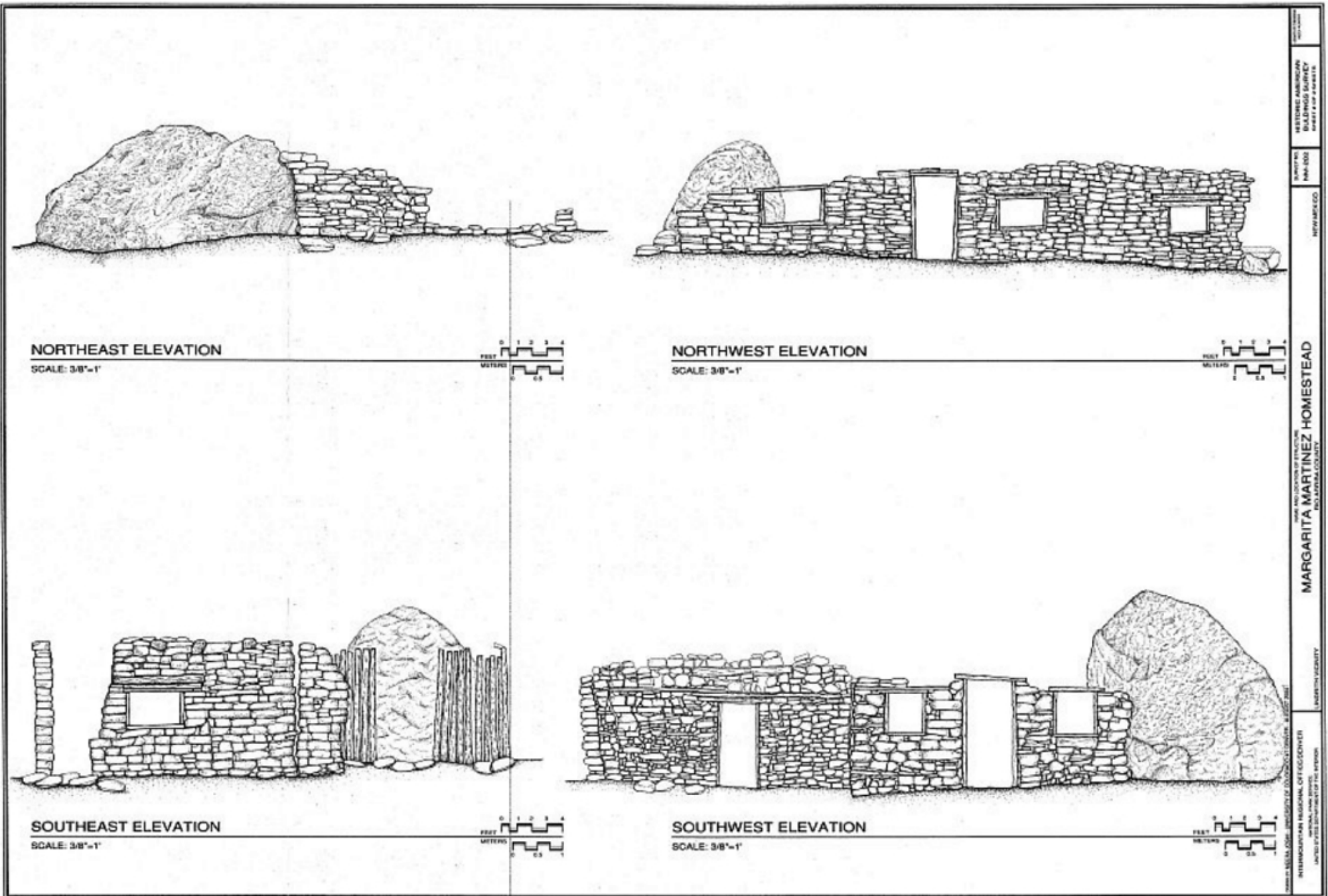
SHORTLY AFTER THE ESTABLISHMENT OF A ROAD TRAVELING THE LENGTH OF LARGO CANYON IN 1876, HOMESTEADERS MOVED INTO THE UPPER PARTS OF THE CANYON AND A WIDELY SPREAD BUT ACTIVE COMMUNITY DEVELOPED. THERE WAS NO CLUSTER OF STRUCTURES; RATHER A CHURCH, STORES, A POST OFFICE, A CEMETERY AND HOMES WERE DISPERSED ACROSS THE LANDSCAPE. MOST STRUCTURES WERE CONSTRUCTED OF SANDSTONE MASONRY WITH WINDOWS AND DOORS FRAMED WITH MILLED LUMBER AND INTERIORS FINISHED IN GYPSUM PLASTER AND WHITEWASH WITH JUNIPER BARK FOR INSULATION. SOFT FLOORS WERE HARDENED BY APPLYING GYPSUM PLASTER OR SLURRY MADE FROM DRIED COW MANURE. SPANISH STYLE ROOFS WERE CONSTRUCTED WITH VIGAS, USUALLY OF DOUGLAS FIR OR PONDEROSA PINE, AND COTTONWOOD LATILLAS. WATERPROOFING WAS ACCOMPLISHED BY COVERING THE LATILLAS WITH CLAY AND SHANK PLASTER. NATURAL FEATURES WERE SOMETIMES UTILIZED, SUCH AS A LARGE ISOLATED BOLDER BEING INCORPORATED INTO ONE OF THE WALLS AT THE MARTINEZ HOMESTEAD.

AFTER THE DEATH OF HER HUSBAND IN 1908, MARGARITA MARTINEZ ESTABLISHED A HOME IN TAFOYA CANYON, A WESTERN TRIBUTARY OF LARGO CANYON. A HOMESTEAD PATENT WAS NEVER ISSUED FOR THE PARCEL CONTAINING THE HOUSE AND CORRAL, WHICH APPEAR TO HAVE BEEN CONSTRUCTED IN AT LEAST TWO PHASES. THE WALL BETWEEN THE SOUTHERN ROOMS OF THE HOUSE CONSISTED OF UPRIGHT JUNIPER POSTS, AND LARGE DOUGLAS FIR VIGAS SPAN THE NORTHERN ROOM. WATER WAS DELIVERED FROM A SPRING IN THE CANYON WALL TO THE HOUSE VIA A SYSTEM OF WOODEN FLUMES. CORNALS FOR THE SHEEP, GOATS AND LATER CATTLE WERE BUILT WEST OF THE HOUSE NEAR ANOTHER SPRING. AFTER HER DEATH IN 1919, THE HOME WAS OCCUPIED AND ENLARGED BY LUIS AND ISABEL (MARGARITA'S DAUGHTER) TAFOYA. THEY SOLD THE HOME IN 1943.

THE WOOL INDUSTRY WAS VITAL TO THE HISPANIC SETTLERS OF LARGO CANYON AND WATER WAS A RELIABLE RESOURCE FROM ABUNDANT SPRINGS, DEPENDABLE RAIN AND CONSISTENT SNOW PACK FROM THE LATE 1890S TO THE 1920S. A CATASTROPHIC FLOOD IN 1927, A DEVASTATING SNOW AND ACCOMPANYING FREEZE IN 1930, COUPLED WITH DROUGHT IN THE LATE 1920S AND THE GREAT DEPRESSION RESULTED IN THE EVENTUAL EXCESS OF THE SETTLERS FROM LARGO CANYON. THE LANDSCAPE CHANGED FROM GRASSY TO WOODY SAGEBRUSH AND THE WOOL INDUSTRY VANISHED. HOMESTEADS WERE ABANDONED AND SOLD FOR TAXES, BECOMING PART OF LARGER CATTLE OPERATIONS, AND LATER SOLD TO THE NAVAJO TRIBE. IN 1991, THE BUREAU OF LAND MANAGEMENT (BLM) ACQUIRED PARCELS CONTAINING SEVERAL OF THE EARLY HOMESTEADS, INCLUDING THE MARGARITA MARTINEZ HOMESTEAD.

THIS PROJECT WAS UNDERTAKEN BY THE INTERMOUNTAIN REGIONAL OFFICE, NATIONAL PARK SERVICE UNDER THE DIRECTION OF HISTORICAL ARCHITECT, THOMAS G. EDWARDS. DOCUMENTATION WAS COMPLETED DURING THE SUMMER OF 2004 BY THE COLLEGE OF ARCHITECTURE AND PLANNING, UNIVERSITY OF COLORADO AT DENVER. DOCUMENTATION WAS COMPLETED BY PROJECT DIRECTORS, LUIS M. SUMMERS AND JUDITH BERDOUST AND ARCHITECTURE GRADUATE STUDENTS MARK SULLIVAN, AN SCHIEB, AND H. ARCHITECTURAL CONSULTATION WAS PROVIDED BY SLM ARCHITECT, PEGGY GAUBY. THE SLM PROVIDED FUNDING FOR THE PROJECT.

NATIONAL PARK SERVICE
 INTERMOUNTAIN REGIONAL OFFICE
 1600 WEST 13TH AVENUE
 DENVER, COLORADO 80202
 MARGARITA MARTINEZ HOMESTEAD
 SOUTHWESTERN ARCHITECTURE
 1600 WEST 13TH AVENUE
 DENVER, COLORADO 80202
 NATIONAL PARK SERVICE
 INTERMOUNTAIN REGIONAL OFFICE
 1600 WEST 13TH AVENUE
 DENVER, COLORADO 80202



NAME AND LOCATION OF STRUCTURE
MARGARITA MARTINEZ HOMESTEAD
 RIO ARriba COUNTY
 NEW MEXICO

LOCATION AND DATE OF SURVEY
 LINDRITH, N.M.
 1933

DRAWING BY
 ARCHITECTURAL RECORDS
 1933

HISTORIC AMERICAN BUILDINGS SURVEY
 ARCHITECTURAL RECORDS
 1933

Reference
 Historic American Buildings Survey, C., Keohan, T., Summers, L. H., Bergquoist, J., Sullivan, M., Scheer, A. [...] Gaudy, P. (1933) *Margarita Martinez Homestead, Lindrith, Rio Arriba County, NM*. Lindrith New Mexico Rio Arriba County, 1933. Documentation Compiled After. [Drawings] Retrieved from the Library of Congress, <https://www.loc.gov/item/nm0262/>.