



## BISTI / DE-NA-ZIN WILDERNESS

**Activities:** Hiking, photography, camping.

**Facilities:** No electrical hookups, water, or restrooms are available.

**Season / Hours:** Open year-round.

**Description:** The Bisti/De-Na-Zin Wilderness is a rolling landscape of badlands which offers some of the most unusual scenery found in the Four Corners Region. Time and natural elements have etched a fantasy world of strange rock formations made of interbedded sandstone, shale, mudstone, coal, and silt. The weathering of the sandstone forms hoodoos - weathered rock in the form of pinnacles, spires, cap rocks, and other unusual forms. Fossils occur in this sedimentary landform. Translated from the Navajo language, Bisti (Bis-tie) means "a large area of shale hills." De-Na-Zin (Deh-nah-zin) takes its name from the Navajo words for "cranes."

Rock units within the Bisti include most of the upper Fruitland Formation (Fossil Forest Member) and lower part of the Kirtland Formation (Hunter Wash Member), both late Cretaceous in age. The rocks are dominated by mudstones and intermittent sandstones, with occasional resistant channel sandstones.

**Access:**

*Bisti Access Parking*

To reach the Bisti Access Parking Area, Drive NM 371 just under 36 miles south of Farmington (from the San Juan River crossing) or just under 45 miles north of Crownpoint, New Mexico (from the intersection of 371 and Navajo Service Route 9), and turn east on Road 7297 (a gravel road). Drive Road 7297 for approximately 2 miles to a T-intersection and turn left. Drive just under one mile to the Bisti Access Parking Area, which is just south of a broad wash on the east side of the road. There is another, smaller parking area ¼ mile further north. As this is a wide-open badland formation with little vegetation, there is no trail; visitors may walk into the area in many directions to explore. You will need to keep track of your surroundings to find your way back to your vehicle.

*De-Na-Zin Trailhead*

To reach the De-Na-Zin access, Drive NM 371 approximately 43¾ miles south of Farmington, New Mexico (from the San Juan River crossing) or approximately 37¼ miles north of Crownpoint, New Mexico (from the intersection of 371 and Navajo Service Route 9), and turn east on County Road 7500. Drive approximately 13¼ miles on Road 7500 to the De-Na-Zin parking area (on the left side of the road). Alternatively, drive US 550, 4 miles north of NM 57, and turn west onto County Road 7500. Drive approximately 11¼ miles to the De-Na-Zin parking area (on the right side of the road). A trail leads from the parking area approximately ¾ mile to the De-Na-Zin Wash, from where visitors walk in many directions to explore. You will need to keep track of your surroundings to find your way back to the trail and your vehicle.

**Advisory:**

1. *Though these trailheads are off regularly maintained roads, they are not paved. County Road 7500 can become extremely slick and impassible when wet. Conditions of roads can change at any time due to weather. Drivers should avoid dirt roads during rain or snow. Drivers should be cautious of wash-out following rain or snowmelt.*
2. *Though camping in the Wilderness is a rewarding experience, there are no water sources. Visitors must carry all the water they will need for the duration of the trip.*

**Special Rules:**

- Since this is a Wilderness Area, it is closed to motorized vehicles and mechanical forms of transportation (mountain bikes included).
- Also prohibited are campfires, collecting fossils or petrified wood, climbing on delicate geologic features, traveling in groups of more than eight people, and trespassing on adjacent tribal lands.
- Permits are required for uses such as grazing, scientific research, and commercial guiding.

Have a positive influence on the area and those around you, practice the **Tread** Lightly!

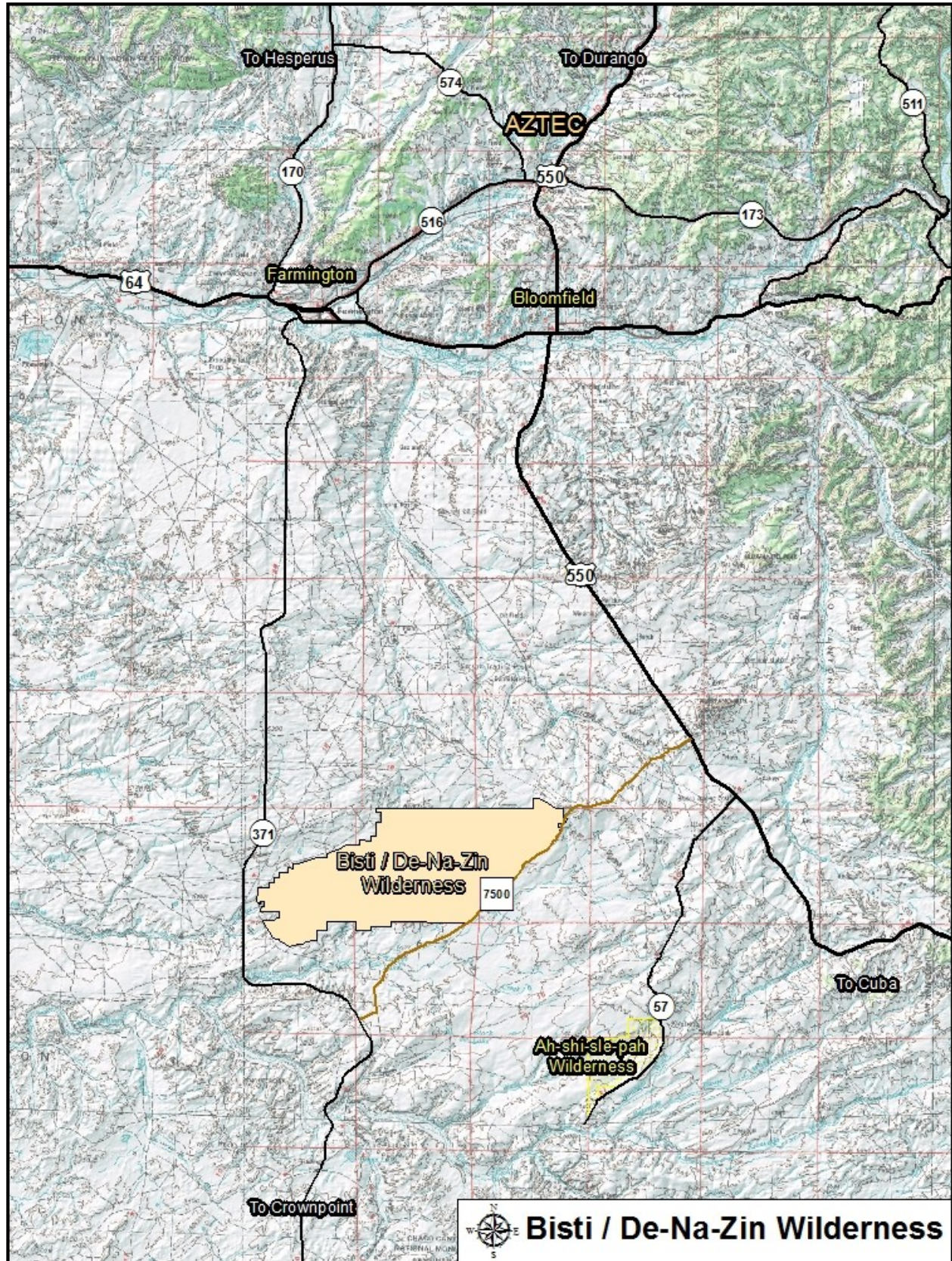
**T**Travel only where permitted.

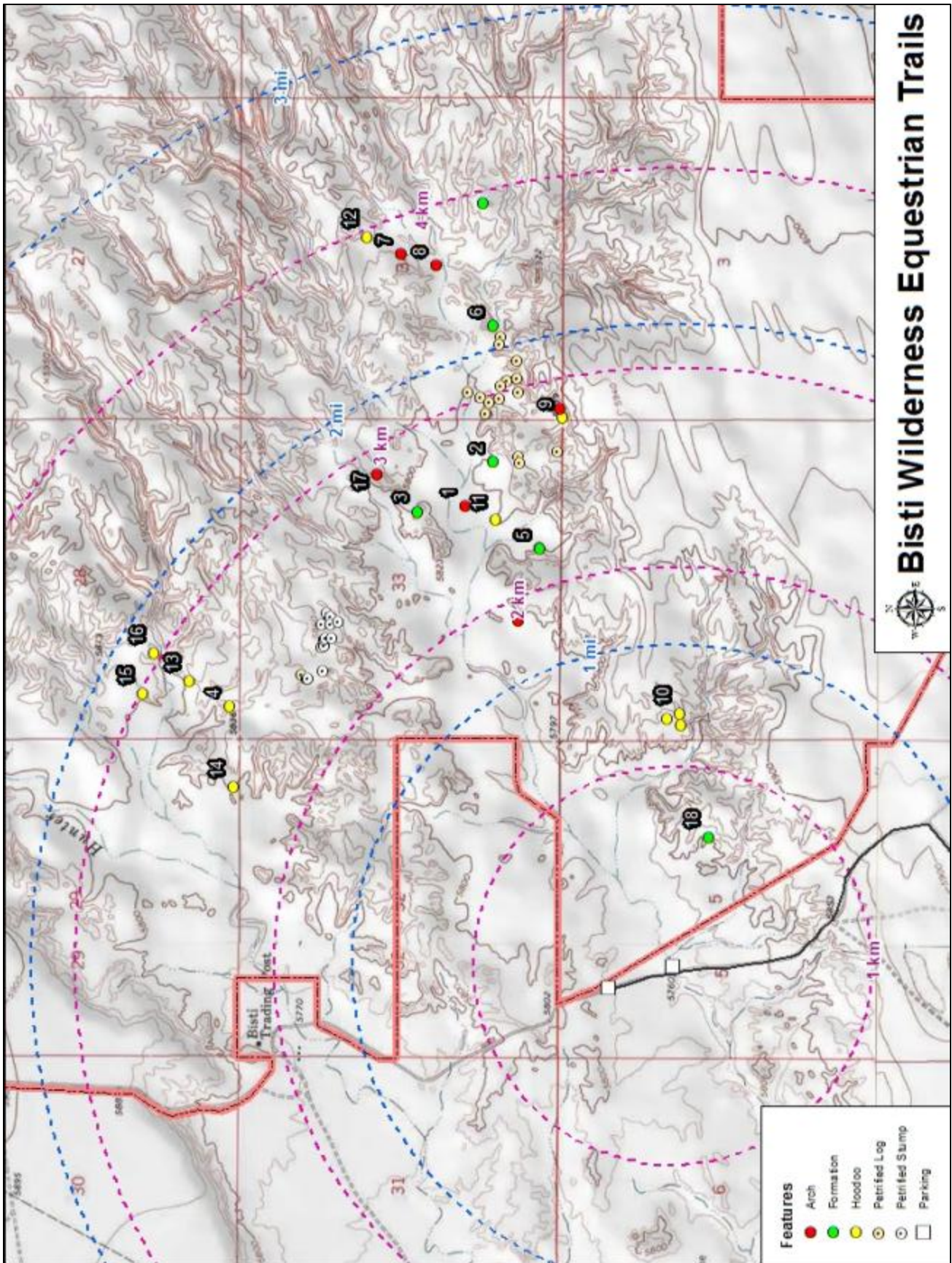
**R**espect the rights of others.

**E**ducate yourself.

**A**void streams, meadows, and wildlife areas.

**D**rive and travel responsibly.





## ARCHES

**Map #:** 1  
**Name:** Bisti Arch (aka Dragon's Head)  
**Dimension:** 2 ft span by 1.3 ft high  
**Latitude:** 36.268692  
**Longitude:** -108.212682  
**Comments:** It is 1.5 mile hike one way.



Sadly as of 2020, the Bisti Arch has collapsed. It is suspected that it had been vandalized or someone tried standing on it for photo-op.

A clear reminder that the features out in the wilderness areas are fragile and so please do not climb on them.

They are irreplaceable!



**Map #:** 7  
**Name:** Knight's Arch (aka Red Queen)  
**Dimension:** Less than 1 ft diameter  
**Latitude:** 36.271637  
**Longitude:** -108.212067  
**Comments:** It is 2.5 mile hike one way.



**Map #:**

**Name:** Flat Top Arch

**Dimension:** 2.5 ft span by 0.7 ft high

**Latitude:** 36.266282

**Longitude:** -108.232475



**Map #:** 8

**Name:** Flying Gator Arch

**Dimension:** 2.0 ft span by 0.5 ft high

**Latitude:** 36.270012

**Longitude:** -108.212682



**Map #:** 17

**Name:** Two Windows Arches

**Dimension:** Left: 4.0 ft span by 4.0 ft high  
Right: 4.5 ft span by 3.0 ft high

**Latitude:** 36.272824

**Longitude:** -108.224224



**Map #:**  
**Name:** -  
**Dimension:** 7 ft span by 5.5 ft high  
**Latitude:** 36.264410  
**Longitude:** -108.220667



**FORMATIONS**

**Map #:** 2  
**Name:** Egg Hatchery  
(aka Cracked eggs, Alien hatchery)  
**Latitude:** 36.267446  
**Longitude:** -108.223653



**Map #:** 3  
**Name:** Bisti Rock Garden  
**Latitude:** 36.270844  
**Longitude:** -108.226430



**Map #:** 18  
**Name:** The Drum Stick  
**Latitude:** 36.257597  
**Longitude:** -108.244525



**Map #:** 5  
**Name:** Komainu (lion-Dog)  
**Latitude:** 36.265321  
**Longitude:** -108.228489



**Map #:**  
**Name:** Egg Garden  
**Latitude:** 36.268139  
**Longitude:** -108.252525





## HOODOOS

**Map #:** 4  
**Name:** The Wings  
**Latitude:** 36.279276  
**Longitude:** -108.237329



**Comments:** Formation consists of three "winged" hoodoos. The middle wing is also an arch called Klingon Bird of Prey Arch. From below it also looks like a seal.



**Map #:** 9  
**Name:** Dino Hoodoo  
**Latitude:** 36.264291  
**Longitude:** -108.221166



**Map #:** 10  
**Name:** The Seal Hoodoo  
**Latitude:** 36.258939  
**Longitude:** -108.237658



**Map #:** 11  
**Name:** Paint Palette Hoodoo  
**Latitude:** 36.267308  
**Longitude:** -108.226868



**Map #:** 12  
**Name:** Two Snakes Hoodoo  
**Latitude:** 36.273163  
**Longitude:** -108.211153



**Map #:** 13  
**Name:** Bonnet Twins Hoodoos  
**Latitude:** 36.281140  
**Longitude:** -108.235952



**Map #:** 14  
**Name:** Hunter Wash Hoodoo  
**Latitude:** 36.279101  
**Longitude:** -108.241840



**Map #:** 15  
**Name:** Doo Doo Bird Hoodoo  
**Latitude:** 36.283221  
**Longitude:** -108.236669



**Map #:** 16  
**Name:** Clam Hoodoo  
**Latitude:** 36.282750  
**Longitude:** -108.234371



**Map #:**  
**Name:** The Ostrich Hoodoo  
**Latitude:** 36.258875  
**Longitude:** -108.238269



Note: As of 2019, the Ostrich Hoodoo is no longer. The head and neck collapsed. This shows clearly how fragile the formations are.



Photo by Cathy Cumberworth.