



LAKE POWELL / GLEN CANYON RECREATION AREA

General Information

Part of Glen Canyon National Recreation Area., Lake Powell is the second largest man-made reservoir in the United States. Lake Powell was created when the newly constructed Glen Canyon Dam blocked the Colorado River in 1963. It took 17 years to for the lake to fill. Encompassing over 1.25 million acres it offers unparalleled opportunities for water-based & backcountry recreation. The recreation area stretches for hundreds of miles from Lees Ferry in Arizona to the Orange Cliffs of southern Utah, encompassing scenic vistas, geologic wonders, and a vast panorama of human history.

Glen Canyon National Recreation Area
691 Scenic View Rd.
Page, AZ 86040
www.nps.gov/glca

Activities

Water recreation and sports, boat tours, fishing, golfing, hiking and camping.

Visitor Centers

There are four Visitor Centers.

www.nps.gov/glca/planyourvisit/visitorcenters.htm

Carl Hayden Visitor Center

Highway 89
(928) 608-6200

The Carl Hayden Visitor Center is the main visitor center for Glen Canyon National Recreation Area and Rainbow Bridge National Monument. The visitor center provides interactive exhibits, introductory films, a relief map of the entire Glen Canyon area, restrooms, a bookstore, and tours of the dam which are provided by Glen Canyon Natural History Association.

Bullfrog Visitor Center

Highway 276 north of Bullfrog Marina
(435) 684-7423

The visitor center provides exhibits relating to geology and the human and natural history of Glen Canyon, Ancestral Puebloan and pioneer artifacts, a life-size model of a slot canyon, a bookstore, restrooms, and a medical clinic (open May thru early October only).

Navajo Bridge Interpretive Center

Highway 89A on west side of Navajo Bridge
(928) 355-2319

The visitor center has a bookstore, outdoor exhibits, and self guided walks across the historic Navajo Bridge. This is a popular spot to look for a California Condor.

Escalante Interagency Visitor Center

755 West Main Street

Escalante, Utah

(435) 826-5499

The visitor center is staffed by Bureau of Land Management, National Park Service, and Forest Service personnel providing information on the Escalante Grand Staircase National Monument, Glen Canyon National Recreation Area, and the Dixie National Forest. Attractions include trip planning exhibits, ecology exhibits, introductory films, restrooms, bookstore, and picnic area.

Camping Facilities

Camping opportunities are abundant in the Glen Canyon National Recreation Area. Primitive camping is allowed along the shorelines of Lake Powell. In addition there are six campgrounds managed by the National Park System and three campgrounds operated by Park's Concessioners.

Lees Ferry Campground

Managed by the National Park Service, there are 54 designated sites. No hookups but an RV dump station is available. Grills provided (no open fires), bathroom/comfort station, and potable water available. Launch ramp within 2 miles. Gas and supply store at Marble Canyon, about 5 miles away. No reservations, sites are first come, first served. Cost of park admission is not included in the camping fee. Camping fee is per night, per site.

www.nps.gov/glca/planyourvisit/camping.htm

Lone Rock Beach Primitive Camping

Managed by the National Park Service primitive camping permitted on a sandy beach or in dunes. No designated campsites. Open fires must be within a four-foot-square area. Four micro-flush toilets, 6 vault toilets, 1 wheelchair accessible comfort station, outdoor cold shower, RV dump station, and potable water (seasonal). No launch ramp. No reservations, sites are first come, first served. Cost of park admission is not included in the camping fee. Camping fee is per vehicle, per night.

www.nps.gov/glca/planyourvisit/camping.htm

Stanton Creek, Hite, Dirty Devil and Farley Primitive Camping Areas

Managed by the National Park Service, primitive camping on beaches or in primitive environments, and no designated campsites. No reservations, sites are first come, first served. Cost of park admission is not included in the camping fee. Camping fee is per vehicle, per night.

www.nps.gov/glca/planyourvisit/camping.htm

Wahweap Developed Camping

Managed by a Park Concessioner, there are 112 dry campsites (no hook-ups), 90 sites with full hook-ups, and 6 group camping sites. Facilities include restrooms, laundry, showers, store, phones, dump station and potable water. The amphitheater, picnic area and swim beach are nearby. Fees vary.

Reservations (800) 528-6154.

Wahweap Camping Store (928) 645-1059

www.lakepowell.com/rv-camping/wahweap-rv-campground

Bullfrog Developed Camping

Managed by a Park Concessioner, there are 78 campsites with restroom, phones, dump station and potable water about 1/2 mile from laundry, store, post office and launch ramp. Fees apply. No reservations.

The concessioner also operates a separate RV park with 24 sites, full hook-ups, restrooms and showers 1/2 mile from laundry, store, post office and launch ramp. Fees apply. Reservations (800) 528-6154.

www.lakepowell.com/rv-camping/bullfrog-rv-campground

Halls Crossing Developed Camping

Managed by a Park Concessioner, there are 43 campsites, 2 group sites, dump station, potable water, 2 dish sinks, hot and cold showers. Laundry, store, gas, phones, and launch ramp within 1/2 mile. The concessioner also operates an RV park with 32 full hook-up sites, store, laundry and showers 1/2 mile from the launch ramp. Fees apply.

Reservations (800) 528-6154

www.lakepowell.com/rv-camping/halls-crossing-rv-campground

Lake Powell Shoreline Primitive Camping

All campsites are required to have a portable toilet unless toilets are available on the vessel or within 200 yards of the campsite. Regular water-quality checks are conducted to ensure compliance with sanitation laws. Pets are allowed on beaches as long as waste is cleaned up. Dispose of waste properly. Burying waste of any kind on the beach is prohibited. Waste may not be contained in a plastic bag unless it is an NPS-approved Waste Bag Containment System, which must be deposited in the trash. No reservations, sites are first come, first served. No camping fee is required.

www.nps.gov/glca/planyourvisit/camping.htm

Marina Facilities

Lake Powell Resorts & Marinas owns and manages four marinas throughout the lake: Wahweap, Bullfrog, Halls Crossing, and Dangling Rope – each offering a range of services and conveniences.

www.lakepowell.com

Wahweap Marina

Wahweap Marina in Page, AZ is the most convenient location if you're coming from California, Arizona, Nevada or Southern Utah. Open year round, it is located just south of the Arizona state border and is the largest marina and home of Lake Powell Resorts. There you'll find the largest fleet of houseboats and recreational watercraft, a variety of restaurants, campground, swimming pools, and lodging with 350 rooms. Additionally, they offer a wide assortment of marina services to visitors with specific needs for their personal boat.

www.lakepowell.com/discover/marina-information/#wahweap

Bullfrog Marina

Bullfrog Marina in Bullfrog, UT is the most convenient location if you're coming from Colorado, New Mexico, or Northern Utah.. Located five hours north by car from Wahweap Marina (95 miles by water) it is the other departure point from which your houseboating adventure can begin. The Defiance House at Bullfrog Marina offers 48 rooms and a casual family restaurant.

Bullfrog Marina is open year round though operating hours vary by season.
www.lakepowell.com/discover/marina-information/#bullfrog

Halls Crossing Marina

Located in Utah, offers a convenience store, snack bar, fueling facilities, launch ramps, and campgrounds. Halls Crossing is open year round though operating hours vary by season.

Dangling Rope Marina

Dangling Rope Marina, located in Utah and accessible by water only, offers a convenience store, snack bar, and fueling services.

Hite Marina

Due to low lake levels, Hite marina is no longer operational.

Fees

Fees vary depending upon camping location.
Park entrance fees and vessel use fees apply.

Fishing

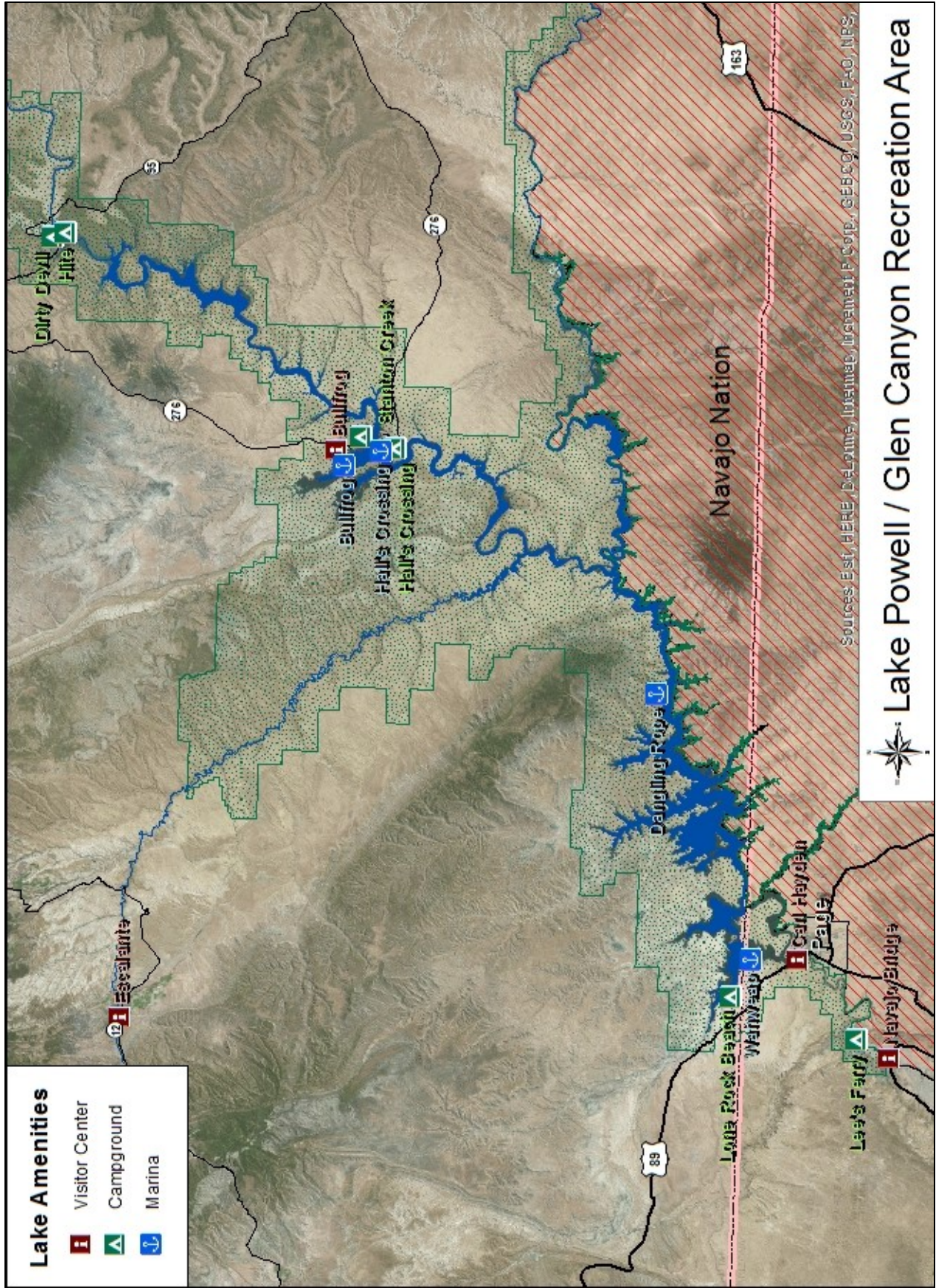
Lake Powell is the fishing destination of choice. The lake is teeming with smallmouth bass, largemouth bass, striped bass, walleye, channel catfish, crappie, and bluegill.

Fishing License

Utah Division of Wildlife Resources, Southeastern Region
319 N Carbonville Rd, Suite A
Price, UT 84501
(435) 613-3700
wildlife.utah.gov

Water Recreation

Lake Powell is a water recreation mecca with an incredibly diverse range of activities, ranging from the most supremely relaxing to the outrageously thrilling. There's house boating, boat tours, wakeboarding, waterskiing, dinner cruises and fishing. The Wahweap and Bullfrog Marinas offer rentals on power boats, house boats, and personal watercraft.



Sources: Esri, HERE, DeLorme, Intermap, IntraMap, Imagery, GEBCO, USCS, FHO, NPS

Lake Powell / Glen Canyon Recreation Area