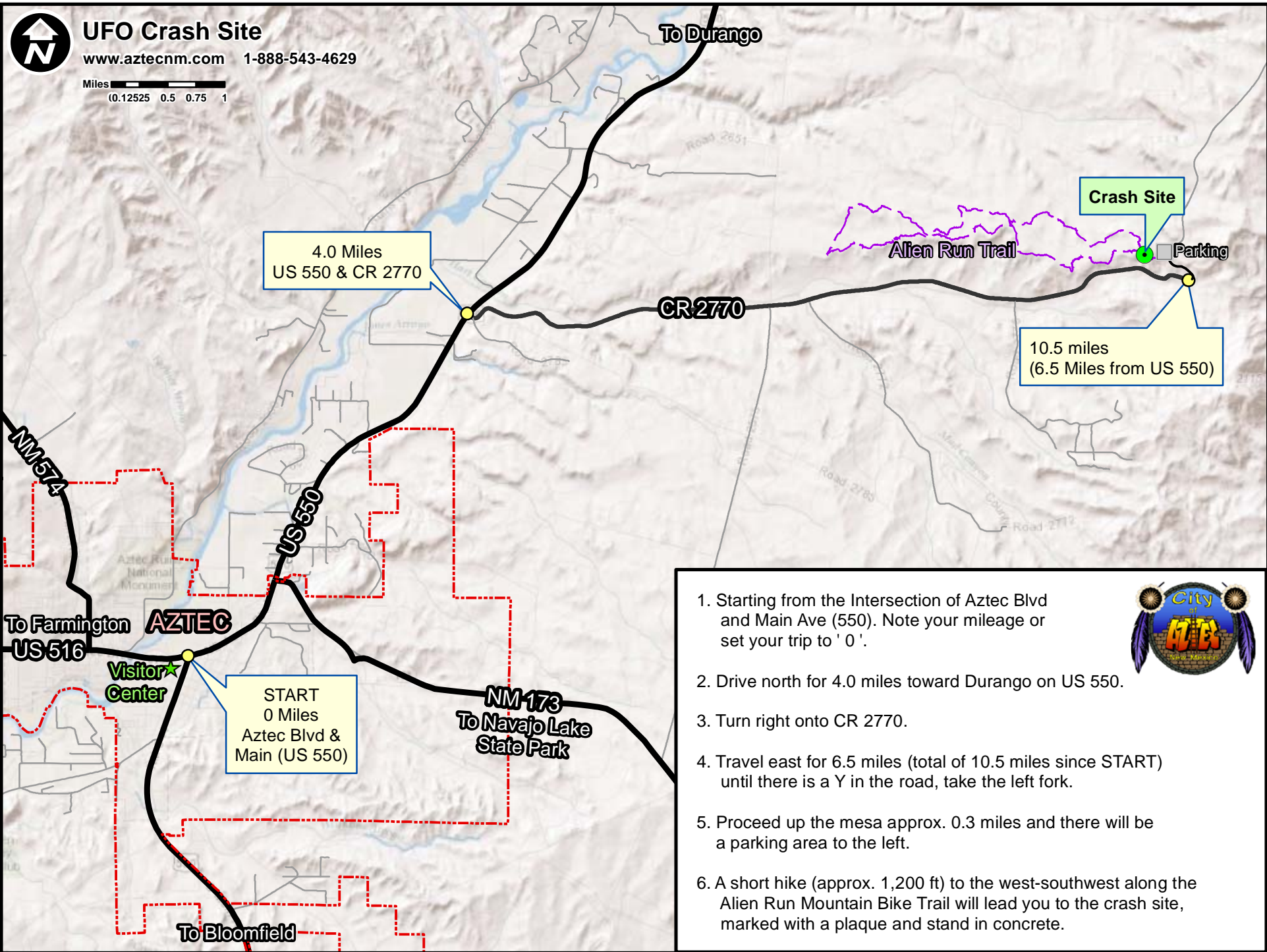




UFO Crash Site

www.aztecnm.com 1-888-543-4629



4.0 Miles
US 550 & CR 2770

10.5 miles
(6.5 Miles from US 550)

START
0 Miles
Aztec Blvd &
Main (US 550)

1. Starting from the Intersection of Aztec Blvd and Main Ave (550). Note your mileage or set your trip to '0'.
2. Drive north for 4.0 miles toward Durango on US 550.
3. Turn right onto CR 2770.
4. Travel east for 6.5 miles (total of 10.5 miles since START) until there is a Y in the road, take the left fork.
5. Proceed up the mesa approx. 0.3 miles and there will be a parking area to the left.
6. A short hike (approx. 1,200 ft) to the west-southwest along the Alien Run Mountain Bike Trail will lead you to the crash site, marked with a plaque and stand in concrete.

