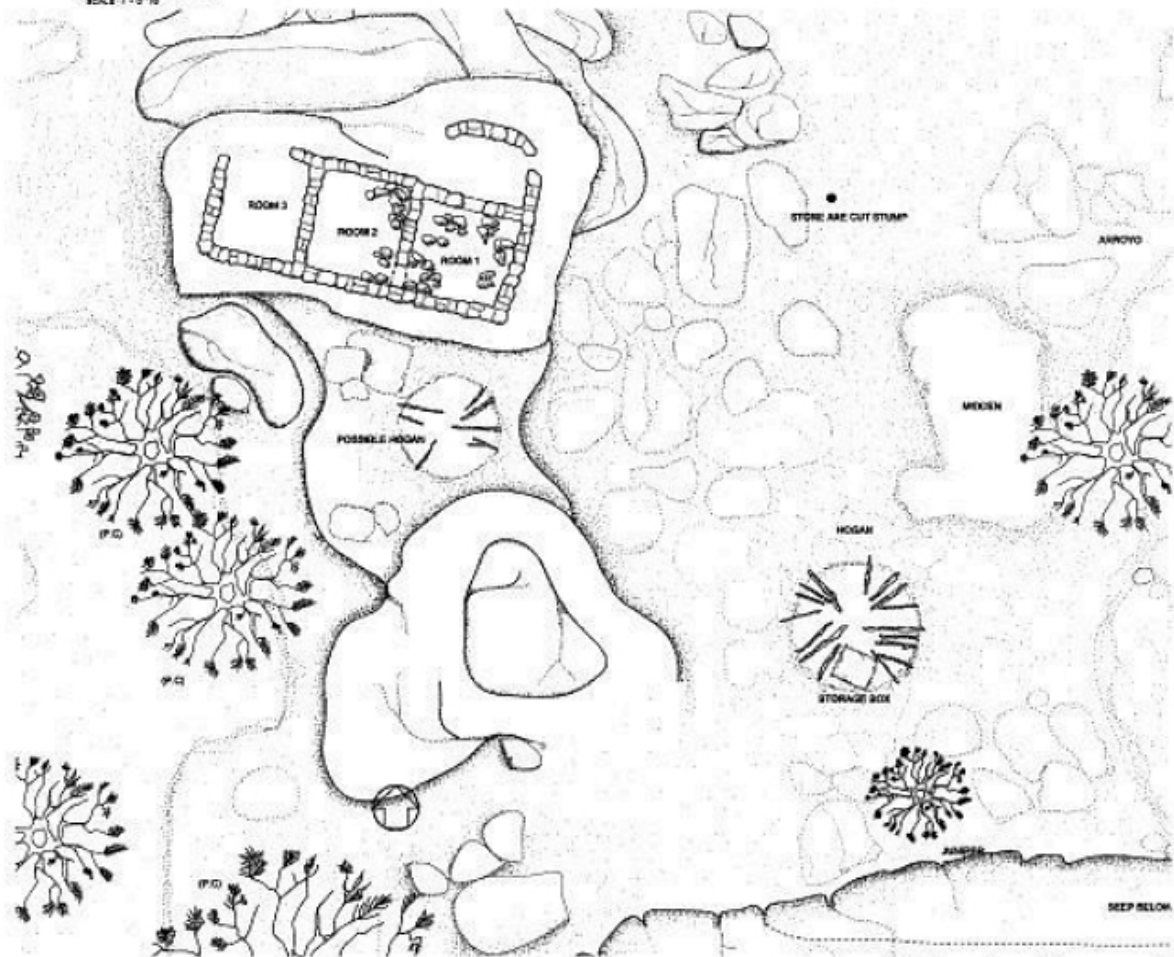


COMPRESSOR STATION PUEBLITO

FROM CANON PHOTOGRAPHS
SCALE: 1" = 2' 10"



PLAN

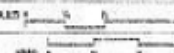
SCALE: 3/16" = 1'-0"



REGION
MAP



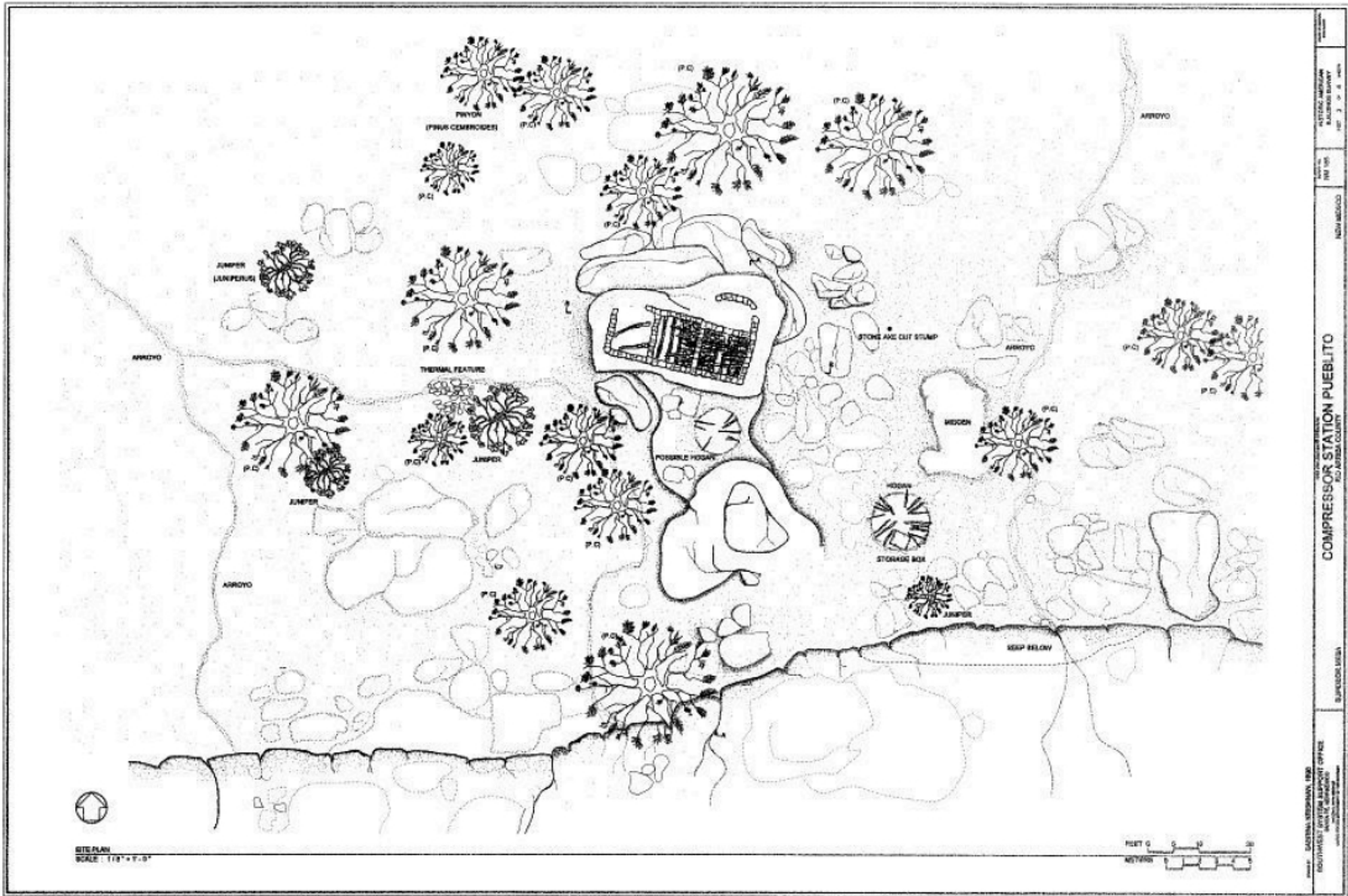
LOCATION
MAP



THE PUEBLITOS ARE SMALL MULTI-ROOMED MASONRY DWELLINGS FOUND IN THE NAVAJO HOMELAND, OR DINETAH REGION OF NORTHWEST NEW MEXICO. DATING FROM THE EARLY 17TH CENTURY, THE PUEBLITOS ARE SIGNIFICANT INDICATORS OF THE COMPLEX SOCIAL RELATIONS THAT EXISTED AMONG THE NAVAJO, PUEBLOS AND OTHER TRIBES WITH THE SPANIARDS.

COMPRESSOR STATION PUEBLITO BUILT BETWEEN 1727 AND 1729, CONSISTS OF A FOUR ROOM PUEBLITO LOCATED ON A SANDSTONE TALUS BOULDER WITH ASSOCIATED BURNT ROCK CONCENTRATION AND FORKED STICK HOGAN. ITS "COLUMNAR" MASONRY CONSTRUCTION IS TYPICAL OF THE PUEBLITOS, BUT THE STONES OF COMPRESSOR STATION APPEAR TO BE WELL CHOSEN FOR THEIR SHAPE TO MINIMIZE JOINT SIZE. THE NAME OF THE SITE REFERS TO THE LARGE NATURAL GAS COMPRESSOR STATION LOCATED IN THE BOTTOM OF LARGO CANYON BELOW THE SITE. SIGNIFICANT FEATURES INCLUDE THE BLIND ENTRY DOORWAY, INTACT ROOF AND CEILING, ASSOCIATED HOGAN WITH SLAB-LINED FEATURE AND THE ALCOVE CONTAINING A SPRING NEARBY.

THIS PROJECT WAS ADMINISTERED BY THE SOUTHWEST SYSTEM SUPPORT OFFICE, NATIONAL PARK SERVICE, HISTORICAL ARCHITECT CATHERINE COLBY. DOCUMENTATION WAS COMPLETED DURING THE SUMMER OF 1996, BY THE HISTORIC RESOURCES IMAGING LABORATORY, COLLEGE OF ARCHITECTURE, TEXAS A&M UNIVERSITY, DAVID G. WOODCOCK, DIRECTOR. DOCUMENTATION WAS COMPLETED BY PROJECT CONSULTANT WILLIAM C. BARBEE, PROJECT SUPERVISOR ROBERT V. GAUPER AND ARCHITECTURAL TECHNICIANS MATTHEW FOX, SABRINA KRISHNAN AND HEIDI STOSICK. ARCHEOLOGICAL CONSULTATION WAS PROVIDED BY THE BUREAU OF LAND MANAGEMENT, FARMINGTON DISTRICT. FIELD OFFICE SPACE WAS PROVIDED BY SAN JUAN COLLEGE THROUGH JUDITH WOODERSON, AUTOCAD TRAINING CENTER MANAGER.



STEELAN
SCALE: 1/8" = 1'-0"

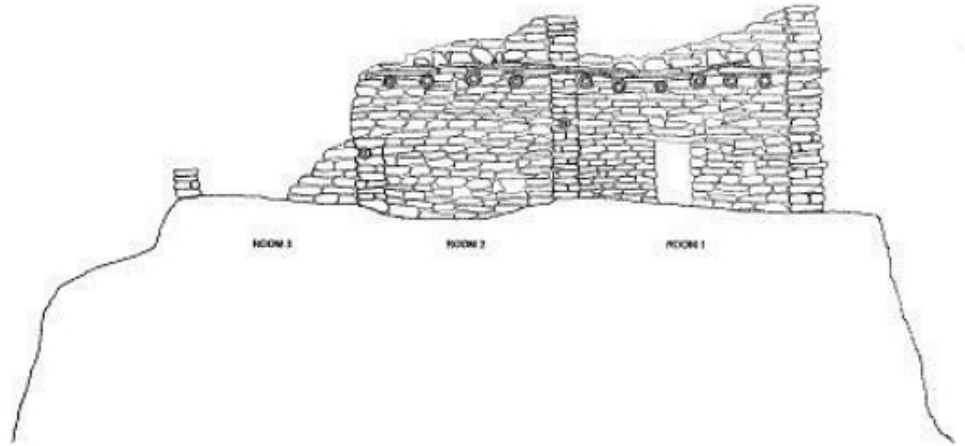
FEET 0 5 10 20
METERS 0 1 2 3 4 5

DATE: 1962
DRAWN BY: J. W. WOOD
CHECKED BY: J. W. WOOD
APPROVED BY: J. W. WOOD
PROJECT: COMPRESSION STATION PUEBLITO
COUNTY: ARIZONA COUNTY
STATE: ARIZONA
NATIONAL MONUMENT: NATURAL MONUMENT
NATIONAL MONUMENT: NATURAL MONUMENT
NATIONAL MONUMENT: NATURAL MONUMENT



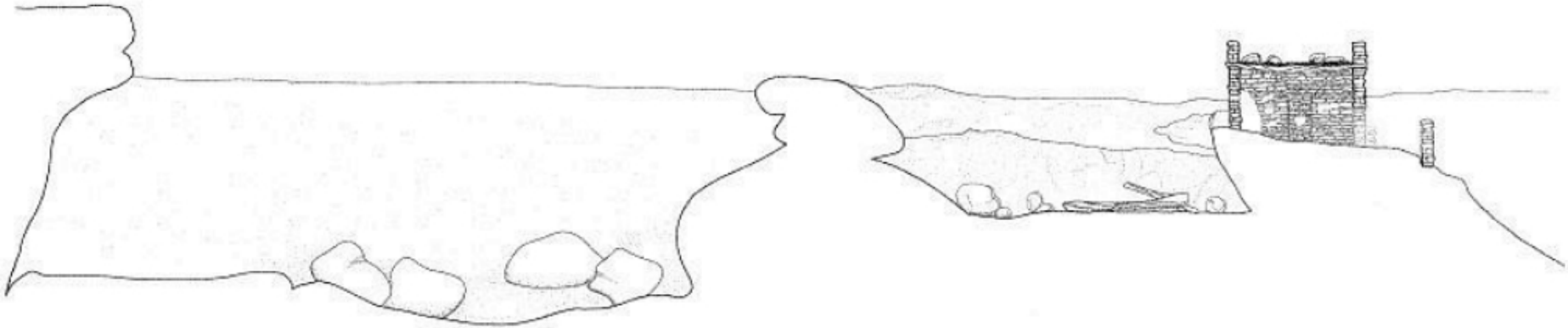
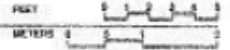
VIGA DETAIL

PERSPECTIVE VIEW



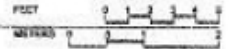
SECTION B - B

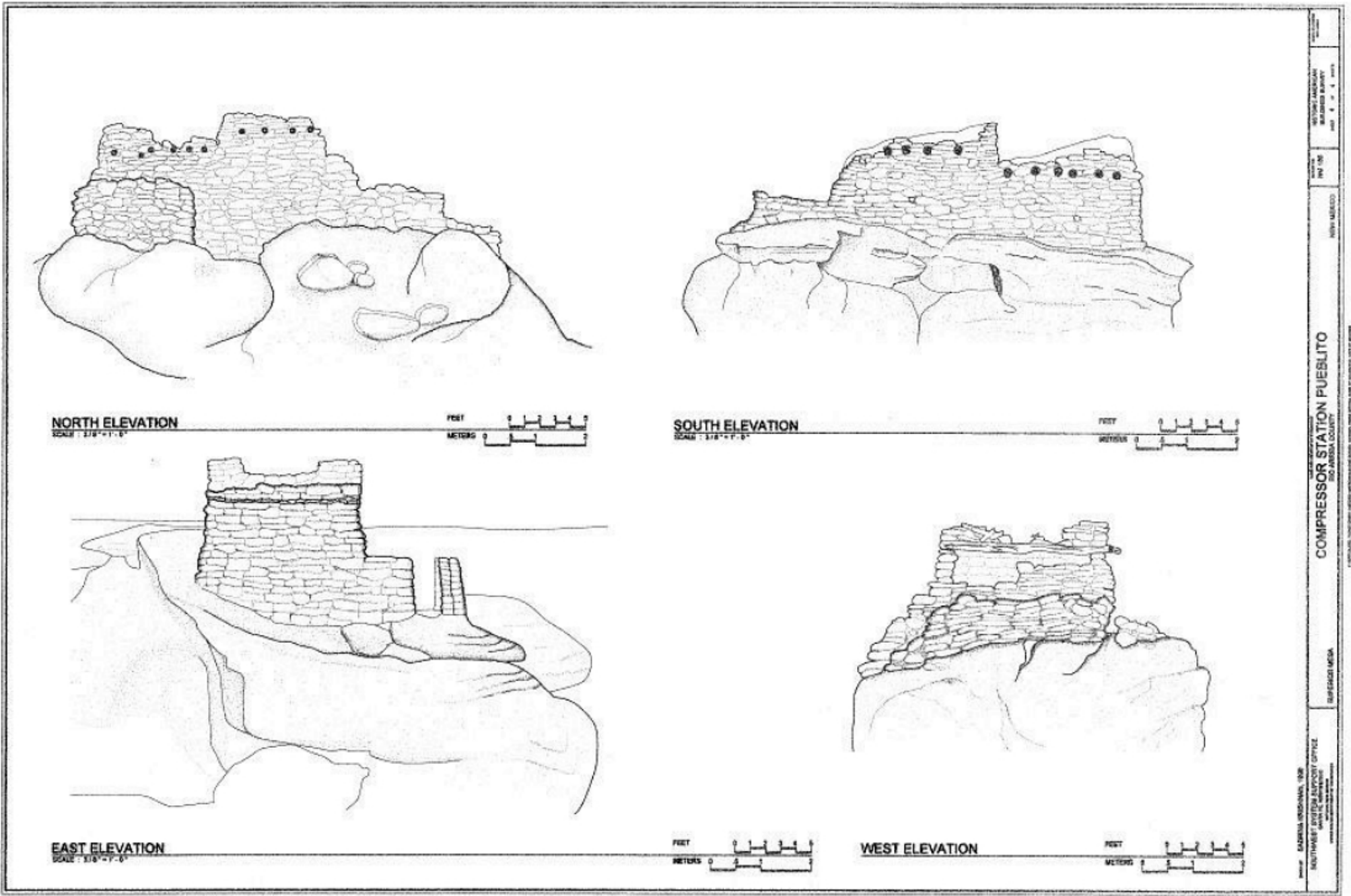
SCALE: 3/8" = 1'-0"



SECTION A - A

SCALE: 3/8" = 1'-0"





DRAWING NO. 100
 HISTORIC AMERICAN BUILDINGS SURVEY
 JAN. 6, 1933
 NM 100
 SUPERIOR MESA
 RIO ARriba COUNTY
 COMPRESSOR STATION PUEBLITO
 SUPERIOR MESA
 RIO ARriba COUNTY
 DRAWN BY: BARBARA WOODMAN, ISB
 MULTIMEDIA PRODUCTION SUPPORT OFFICE
 NATIONAL ARCHIVES

Reference

Historic American Buildings Survey, C., Barbee, W. C., Gauper, R., Fox, M., Stosick, H., Colby, C. [...] Bureau Of Land Management, F. D. (1933) *Compressor Station Pueblito, Superior Mesa, Dulce, Rio Arriba County, NM*. Dulce New Mexico Rio Arriba County, 1933. Documentation Compiled After. [Drawings] Retrieved from the Library of Congress, <https://www.loc.gov/item/nm0306/>.